

APP CRS	Rwy Idg	5002
175°	TDZE	1283
	Apt Elev	1300

RNAV (GPS) RWY 17R

WILEY POST (PWA)

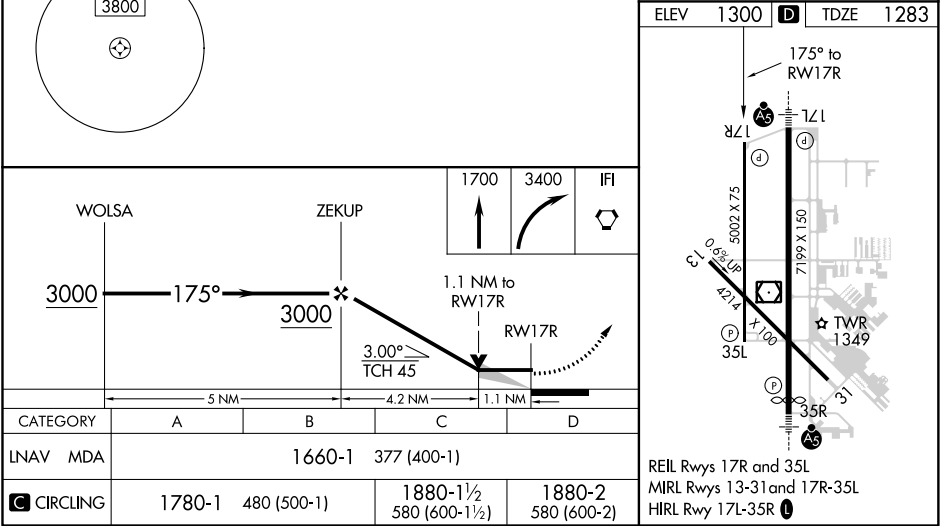
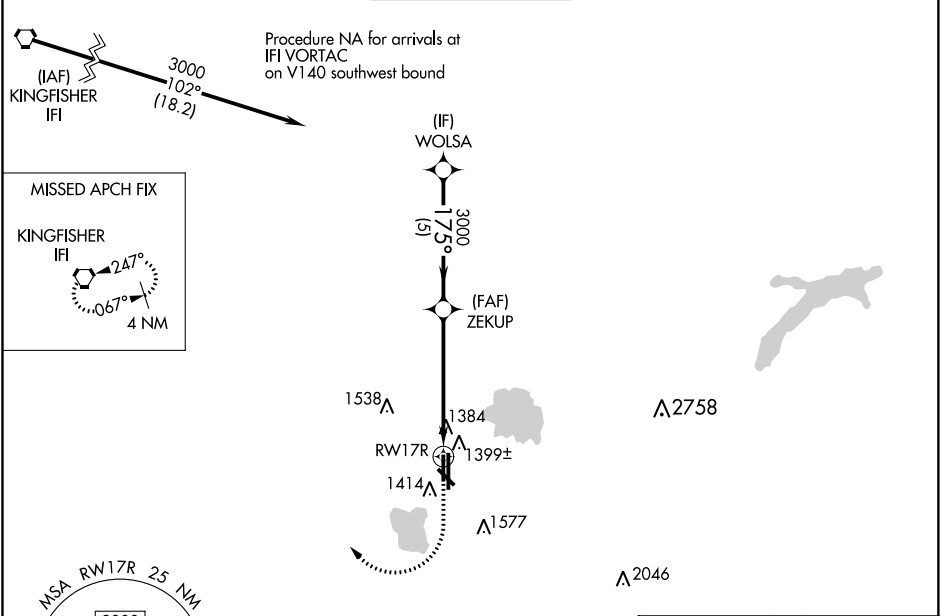
⚠ DME/DME RNP-0.3 NA, VDP NA when using Will Rogers World altimeter setting.

⚠ When local altimeter setting not received, use Will Rogers World altimeter setting and increase all MDA 40 feet: increase LNAV Cat C/D visibility ½ mile, Circling Cat C ¼ mile.

ASR

MISSED APPROACH: Climb to 1700 then climbing right turn to 3400 direct IFI VORTAC and hold.

ATIS 128.725	OKE CITY APP CON 124.6 266.8	WILEY POST TOWER ★ 126.9 (CTAF) 0 306.9	GND CON 121.7	UNICOM 122.95
-----------------	---------------------------------	--	------------------	------------------



SC-1, 03 DEC 2020 to 31 DEC 2020

SC-1, 03 DEC 2020 to 31 DEC 2020