

WAAS CH 78437 W35B	APP CRS 355°	Rwy Idg TDZE 1275 Apt Elev 1300	RNAV (GPS) RWY 35L WILEY POST (PWA)
--	------------------------	---	---

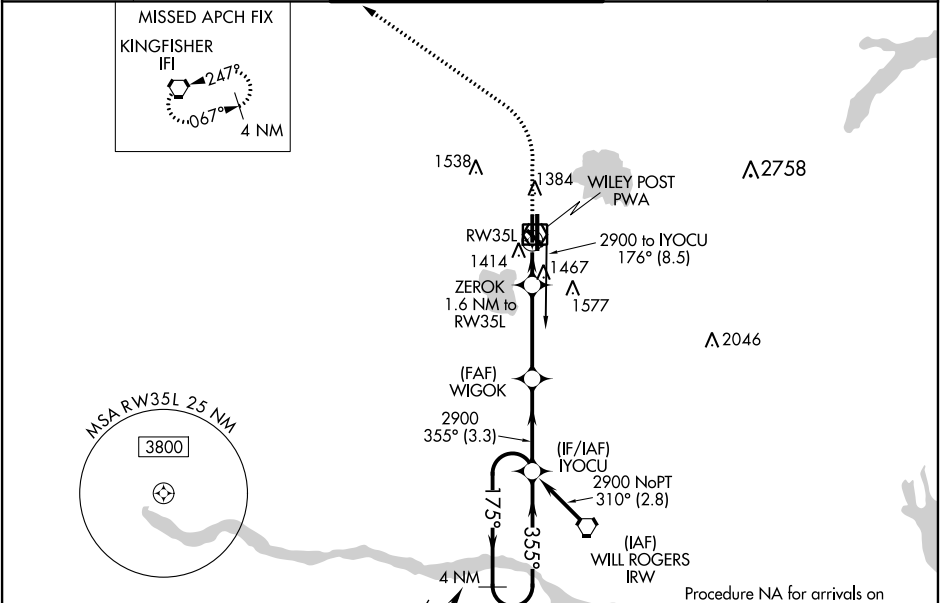
▼

ASR

DME/DME RNP-0.3 NA. VDP NA when using Will Rogers World altimeter setting. When local altimeter setting not received, use Will Rogers World altimeter setting and increase all MDA 40 feet; increase LP Cat C/D visibility ½ mile and Circling Cat C ¼ mile.

MISSED APPROACH:
Climb to 1700 then climbing left turn to 3400 direct IFI VORTAC and hold.

ATIS 128.725	OKE CITY APP CON 124.6 266.8	WILEY POST TOWER ★ 126.9(CTAF) 306.9	GND CON 121.7	UNICOM 122.95
------------------------	--	--	-------------------------	-------------------------



ELEV 1300

D

TDZE 1275

1700

3400

IFI

WIGOK

IYOCU

4 NM Holding Pattern

ZEROK 1.6 NM to RW35L

1.1 NM to RW35L

1820

3.00° TCH 45

175°

355°

2900

CATEGORY	A	B	C	D
LP MDA	1660-1	385 (400-1)	1660-1½	385 (400-1½)
LNAV MDA	1720-1	445 (500-1)	1720-1¾	445 (500-1¾)
CIRCLING	1780-1	480 (500-1)	1880-1½ 580 (600-1½)	1880-2 580 (600-2)