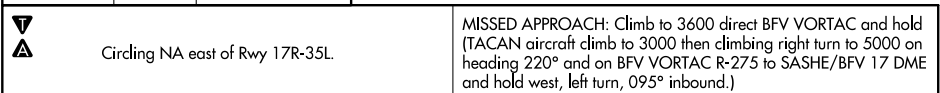


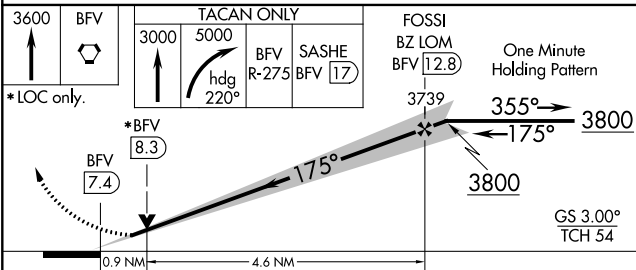
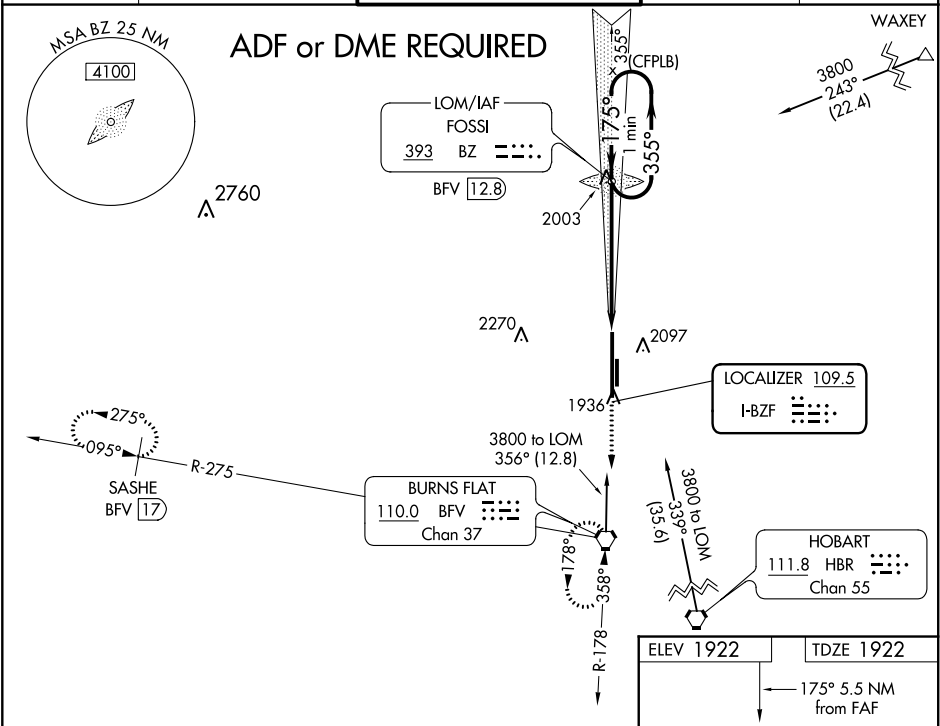
19031

LOC I-BZF <u>109.5</u>	APP CRS 175°	Rwy Idg TDZE Apt Elev	13503 1922 1922
----------------------------------	------------------------	-----------------------------	--------------------------------------------

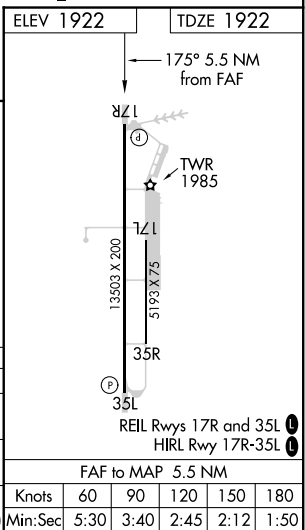
ILS or LOC RWY 17R
CLINTON-SHERMAN (CSM)



ASOS 118.45	FORT WORTH CENTER 128.4 269.37	CLINTON-SHERMAN TOWER ★ 119.6 (CTAF) 0 256.9	GND CON 121.7 239.0	UNICOM 122.95
----------------	-----------------------------------	-------------------------------------------------	------------------------	------------------



CATEGORY	A	B	C	D	E
S-ILS 17R	2122- ³ / ₄ 200 (200- ³ / ₄)				
S-LOC 17R	2260-1 338 (400-1)				
C CIRCLING	2340-1 418 (500-1)	2380-1 458 (500-1)	2380-1 ¹ / ₂ 458 (500-1 ¹ / ₂)	2620-2 ¹ / ₄ 698 (700-2 ¹ / ₄)	2620-2 ¹ / ₂ 698 (700-2 ¹ / ₂)



BURNS FLAT, OKLAHOMA
Amdt 8 27APR17

35°20'N-99°12'W

CLINTON-SHERMAN (CSM)
ILS or LOC RWY 17R

SC-1, 03 DEC 2020 to 31 DEC 2020

SC-1, 03 DEC 2020 to 31 DEC 2020