

WAAS CH <b>53417</b> <b>W35A</b>	APP CRS <b>353°</b>	Rwy Idg TDZE <b>1561</b> Apt Elev <b>1563</b>
--	------------------------	---

RNAV (GPS) RWY 35

HOBART RGNL (HBR)

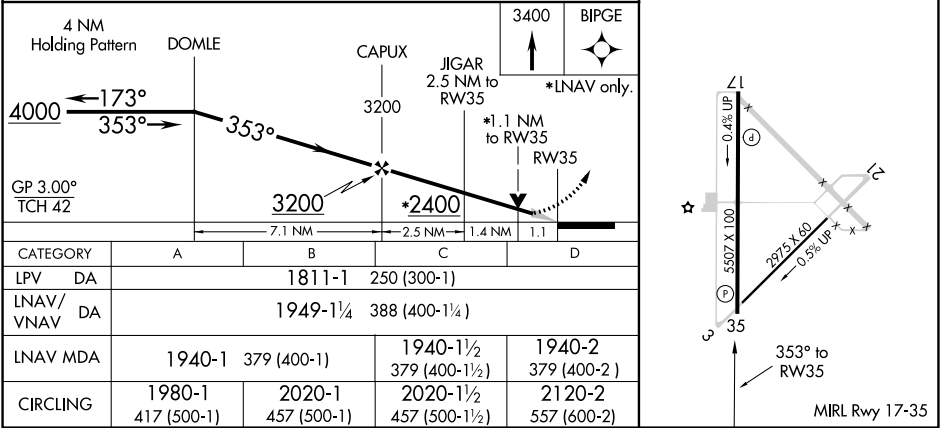
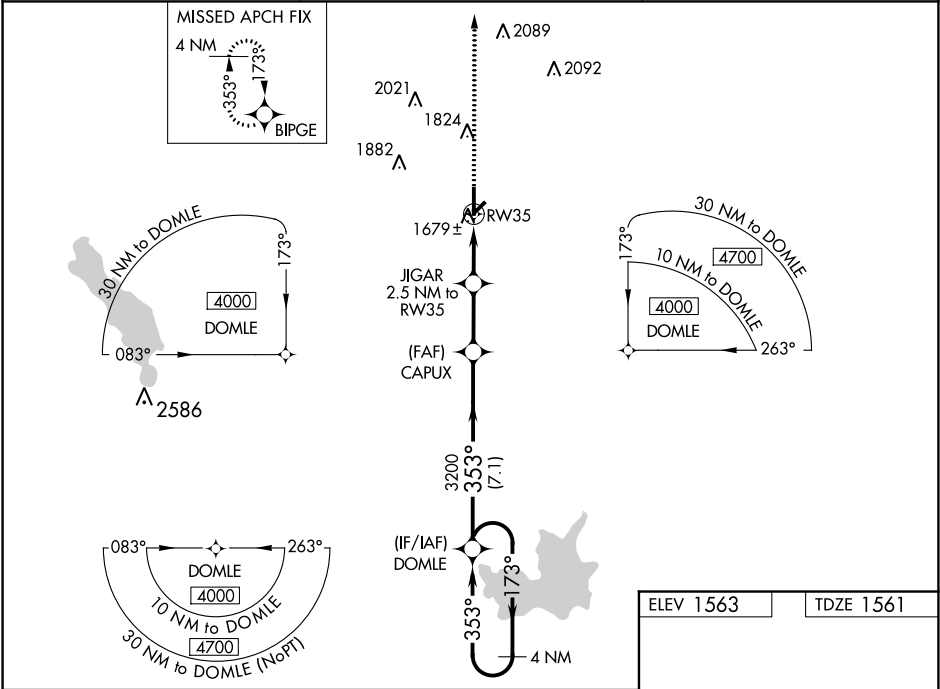
⚠

⚠

For uncompensated Baro-VNAV systems, LNAV/VNAV NA below -18°C (0°F) or above 45°C (113°F). DME/DME RNP-0.3 NA. When local altimeter setting not received, use Altus/Quartz Mountain Rgnl altimeter setting and increase all DA 71 feet and all MDA 80 feet, increase LPV all Cats visibility ¼ mile, LNAV/VNAV all Cats visibility ½ mile and LNAV Cats C and D visibility ¼ mile. Baro-VNAV NA when using Altus/Quartz Mountain Rgnl altimeter setting. VDP NA with Altus/Quartz Mountain Rgnl altimeter setting.

MISSED APPROACH: Climb to 3400 direct BIPGE and hold.

ASOS <b>133.325</b>	ALTUS APP CON★ <b>125.1 353.7</b>	UNICOM <b>122.8</b> (CTAF)
------------------------	--------------------------------------	-------------------------------



SC-1, 03 DEC 2020 to 31 DEC 2020

SC-1, 03 DEC 2020 to 31 DEC 2020