

WAAS CH 77640 W35A	APP CRS 351°	Rwy Idg 8599 TDZE 1089 Apt Elev 1110
--	------------------------	---

RNAV (GPS) RWY 35

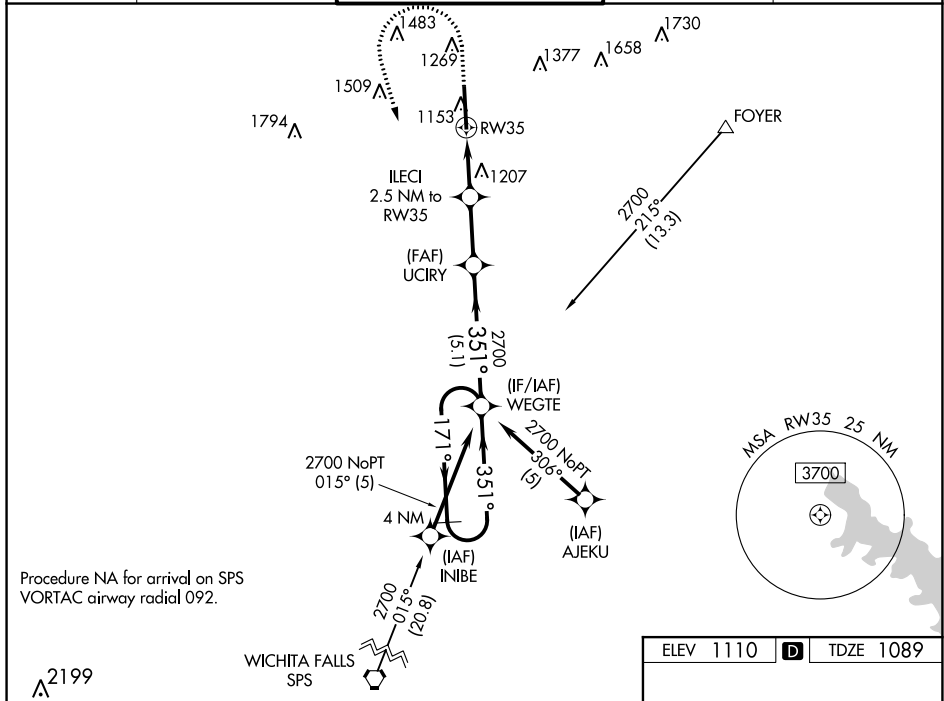
RNP APCH.

T For uncompensated Baro-VNAV systems, LNAV/VNAV NA below -11°C or above 54°C. For inop ALS, increase LNAV/VNAV all Cats visibility to $\frac{7}{8}$ SM.

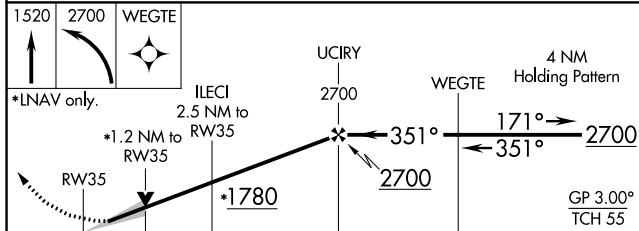
MALSP

MISSED APPROACH: (Do not exceed 200K until WEGTE) Climb to 1520 then climbing left turn to 2700 direct WEGTE and hold.

ATIS 120.75	FORT SILL APP CON 120.55 322.4	LAWTON TOWER ★ 119.9 (CTAF) 0 257.8	GND CON 121.9	UNICOM 122.95
-----------------------	--	---	-------------------------	-------------------------



Procedure NA for arrival on SPS
VORTAC airway radial 092.



		1.2 NM	1.3 NM	2.4 NM	5.1 NM	
CATEGORY		A	B	C	D	
LPV	DA	1289-1½			200 (200-½)	
LNAV/ VNAV	DA	1376-1½			287 (300-½)	
LNAV	MDA	1520-1½	431 (500-½)	1520-¾	431 (500-¾)	
CIRCLING		1620-1	510 (600-1)	1820-2 710 (800-2)	1820-2¼ 710 (800-2¼)	

