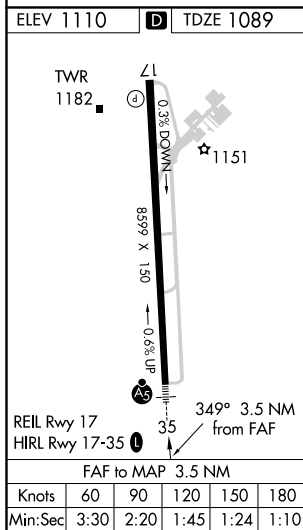
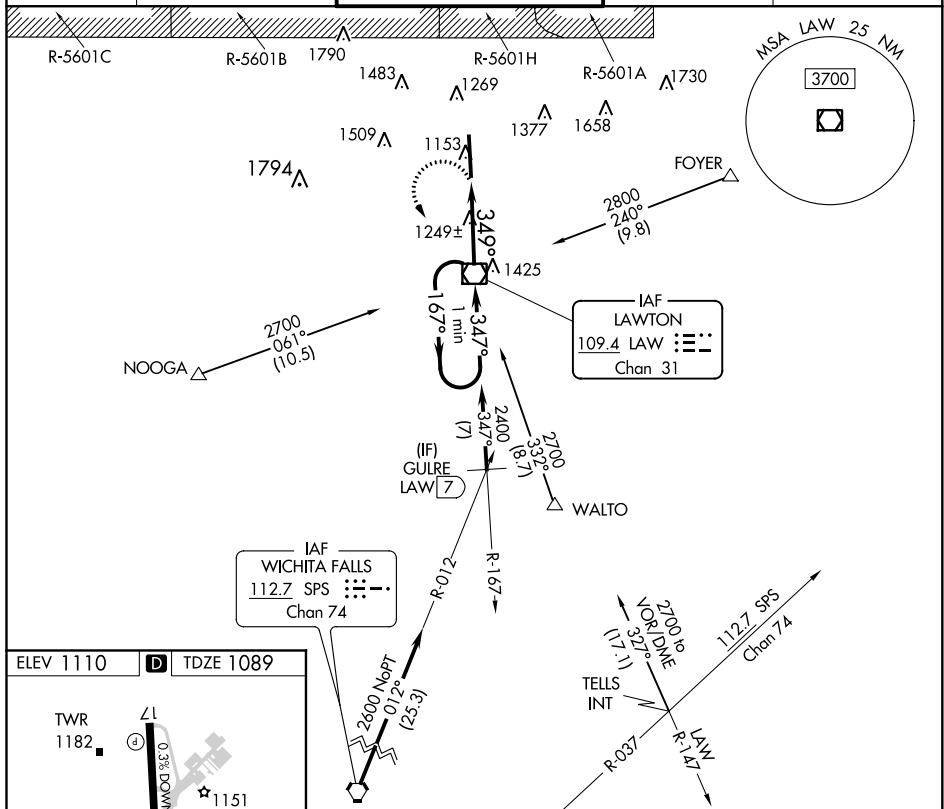


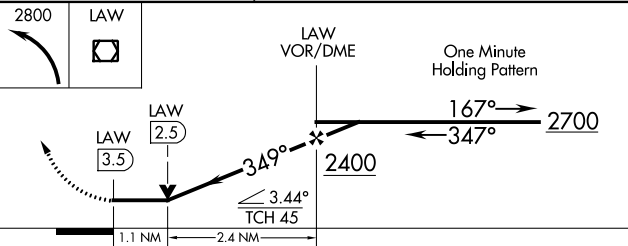
VOR RWY 35
LAWTON-FORT SILL RGNL (LAW)

MALSR

MISSED APPROACH: Climbing left turn to 2800 direct LAW VOR/DME and hold, continue climb-in-hold to 2800.

ATIS 120.75	FORT SILL APP CON 120.55 322.4	LAWTON TOWER ★ 119.9 (CTAF) 0 257.8	GND CON 121.9	UNICOM 122.95
-----------------------	------------------------------------------	-----------------------------------------------	-------------------------	-------------------------



				
CATEGORY	A	B	C	D
S-35	1500-½	411 (500-½)	1500-¾	411 (500-¾)
C CIRCLING	1620-1	510 (600-1)	1820-2 710 (800-2)	1820-2¼ 710 (800-2¼)