
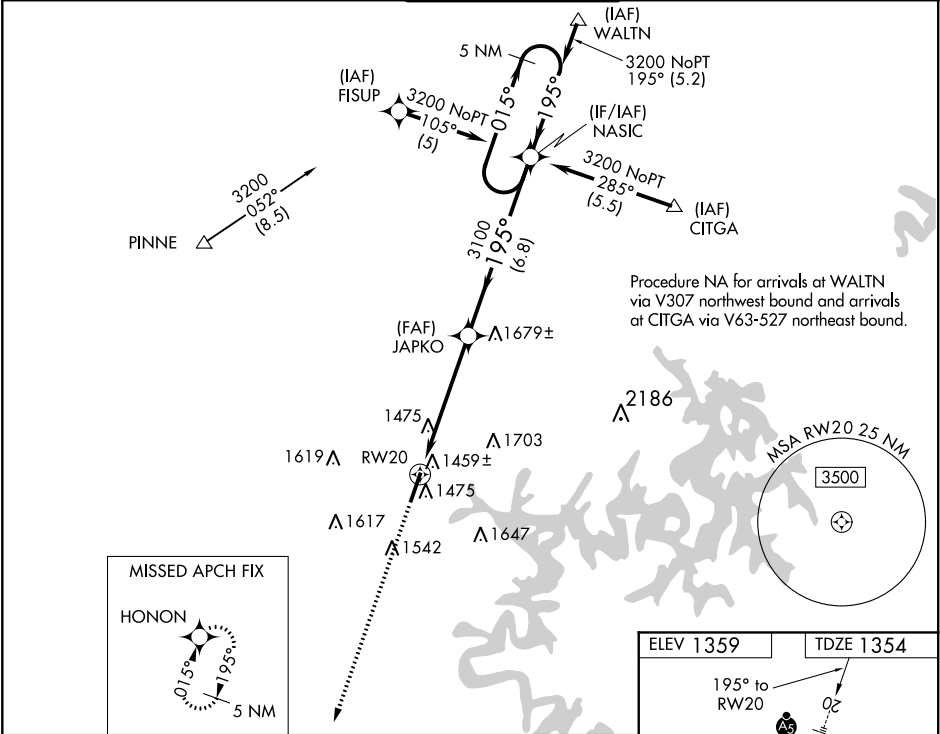



WAAS CH <b>40003</b> <b>W20A</b>	APP CRS <b>195°</b>	Rwy Idg <b>6011</b> TDZE <b>1354</b> Apt Elev <b>1359</b>	<b>RNAV (GPS) RWY 20</b> ROGERS EXECUTIVE-CARTER FIELD (ROG)	
▼ For inop MALSR, increase LNAV Cat D to 1½. For uncompensated Baro-VNAV systems, LNAV/VNAV NA below -17°C (2°F) or above 46°C (114°F). DME/DME RNP-0.3 NA. If local altimeter setting not received, use Bentonville Muni altimeter setting and increase all DAs 22 feet and all MDAs 40 feet. Baro-VNAV and VDP NA when using Bentonville Muni altimeter setting.			MALSR 	MISSED APPROACH: Climb to 3100 direct HONON and hold.
AWOS-3PT <b>134.375</b>	RAZORBACK APP CON* <b>126.6 305.2</b>	ROGERS TOWER* <b>119.375 (CTAF) 0</b>	GND CON <b>118.0</b>	CLNC DEL <b>121.75</b>



3100 ↑	HONON 	VGSI and descent angles not coincident (VGSI angle 3.00/TCH 55).		5 NM Holding Pattern
*LNAV only	*1.1 NM to RW20	JAPKO	NASIC	015° → 3200 ← 195°
RW20	1.1 NM	4.2 NM	6.8 NM	GP 3.00° TCH 58
CATEGORY	A	B	C	D
LPV DA	1604-½		250 (300-½)	
LNAV/VNAV DA	1730-¾		376 (400-¾)	
LNAV MDA	1740-½		386 (400-½)	
1740-1	386 (400-1)		1740-1	
3100	461 (500-1)		2020-1¾	
2020-2	661 (700-1¾)		2020-2	
661 (700-2)	661 (700-2)		661 (700-2)	
CIRCLING	1820-1	461 (500-1)	2020-1¾	2020-2
661 (700-1¾)	661 (700-1¾)		661 (700-2)	
REIL Rwy 2 0	HIRL Rwy 2-20 0		HIRL Rwy 2-20 0	