

WAAS CH 50525 W36A	APP CRS 357°	Rwy Idg TDZE Apt Elev	5904 3125 3125
--	------------------------	-----------------------------	---

RNAV (GPS) RWY 36

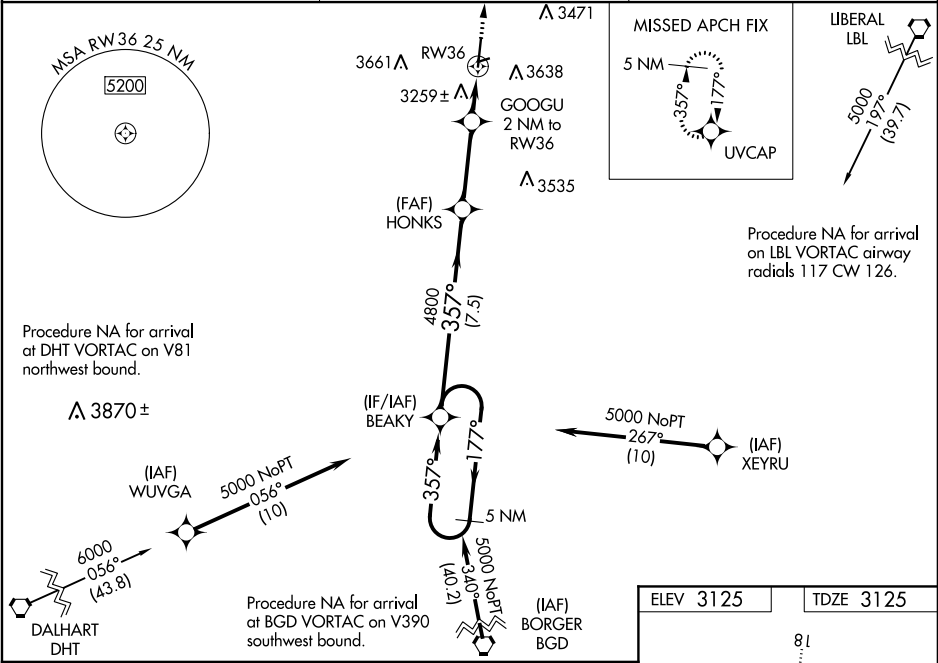
GUYMON MUNI (GUY)

⚠

Baro-VNAV NA when using Liberal altimeter setting. For uncompensated Baro-VNAV systems, LNAV/VNAV NA below -21°C (-5°F) or above 54°C (130°F). When VGSI inop, Straight-in/Circling Rwy 36 procedure NA at night. Circling NA East of Rwy 18-36. DME/DME RNP-0.3 NA. Visibility reduction by helicopters NA. When local altimeter not received, use Liberal altimeter setting and increase all DA 113 feet and all MDA 120 feet, increase LPV all Cts visibility ¼ mile, increase LNAV/VNAV all Cts and LNAV Cat C visibility ⅓ mile. Circling NA to Rwy 6 and 24.

MISSED APPROACH:
Climb to 6000 direct
UVCAP and hold.

ASOS 119.925	KANSAS CITY CENTER 134.0 257.865	UNICOM 122.7 (CTAF)
------------------------	--	-------------------------------



5 NM Holding Pattern		BEAKY		HONKS		GOOGU 2 NM to RW36		RW36	
5000		←177°		→357°		4800		*3780	
GP 3.00°		TCH 35		7.5 NM		3.2 NM		2 NM	
CATEGORY	A	B		C		D			
LPV DA	3375-1		250 (300-1)		NA				
LNAV/VNAV DA	3584-1½		459 (500-1½)		NA				
LNAV MDA	3520-1	395 (400-1)		3520-1½		395 (400-1½)		NA	
CIRCLING	3580-1	455 (500-1)		3580-1½		455 (500-1½)		NA	

