

WAAS CH <b>90108</b> <b>W17A</b>	APP CRS <b>174°</b>	Rwy Idg <b>7401</b> TDZE <b>1000</b> Apt Elev <b>1000</b>
--	------------------------	---

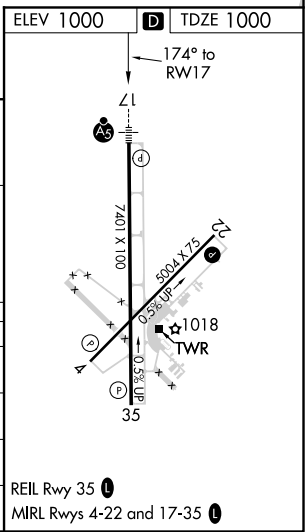
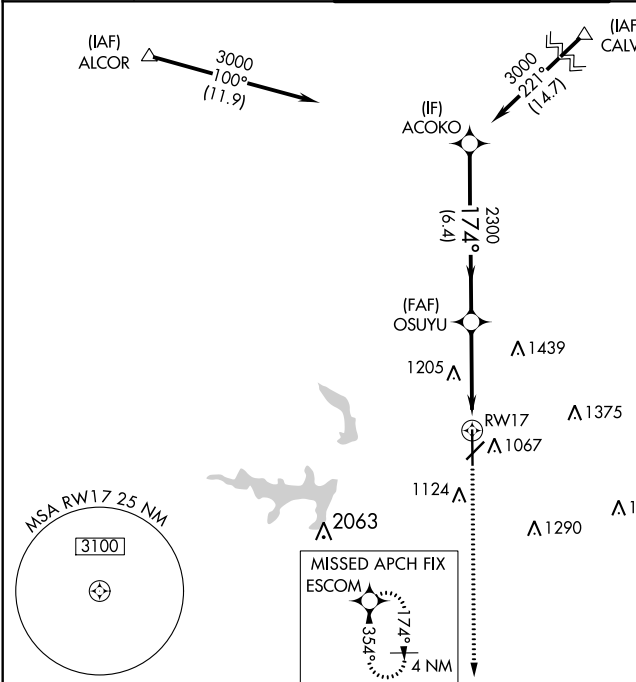
RNAV (GPS) RWY 17  
STILLWATER RGNL (SWO)

**⚠** When local altimeter setting not received, use Ponca City Rgnl altimeter setting, increase all DA/MDA 80 feet, increase LPV visibility ½ mile all Cats, LNAV/VNAV visibility ¼ mile all Cats, LNAV Cats C/D visibility ¼ mile and Circling Cat D visibility ½ mile. VDP and Baro-VNAV NA when using Ponca City Rgnl altimeter setting. Baro-VNAV NA below -17°C (2°F). DME/DME RNP-0.3 NA. For inop MALS, when using Ponca City Rgnl altimeter setting, increase LPV all Cats visibility to 1¼ mile; LNAV/VNAV visibility all Cats to 1¼ mile.

**MALS**

**MISSED APPROACH:**  
Climb to 3000 direct ESCOM WP and hold.

ASOS <b>135.725</b>	KANSAS CITY CENTER <b>127.8 319.1</b>	STILLWATER TOWER ★ <b>125.35</b> (CTAF) <b>0</b>	GND CON <b>121.6</b>	UNICOM <b>122.95</b>
------------------------	--	---	-------------------------	-------------------------



Procedure Turn NA		ACOKO		VGSI and LPV glidepath not coincident (VGSI Angle 3.00/TCH 48).		3000	ESCOM
GP 3.00° TCH 45		OSUYU		*1.4 NM to RWY17		*LNAV only.	
		RWY17					
		6.4 NM		2.5 NM		1.4 NM	
CATEGORY		A	B	C	D		
LPV DA		1250-½		250 (300-½)			
LNAV/VNAV DA		1420-1		420 (500-1)			
LNAV MDA		1480-½	480 (500-½)	1480-¾ 480 (500-¾)	1480-1 480 (500-1)		
CIRCLING		1480-1	480 (500-1)	1520-2 520 (600-2)	1740-2¼ 740 (800-2¼)		

SC-1, 03 DEC 2020 to 31 DEC 2020

SC-1, 03 DEC 2020 to 31 DEC 2020