
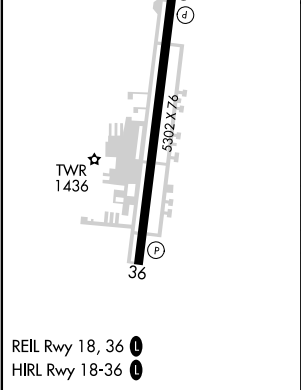
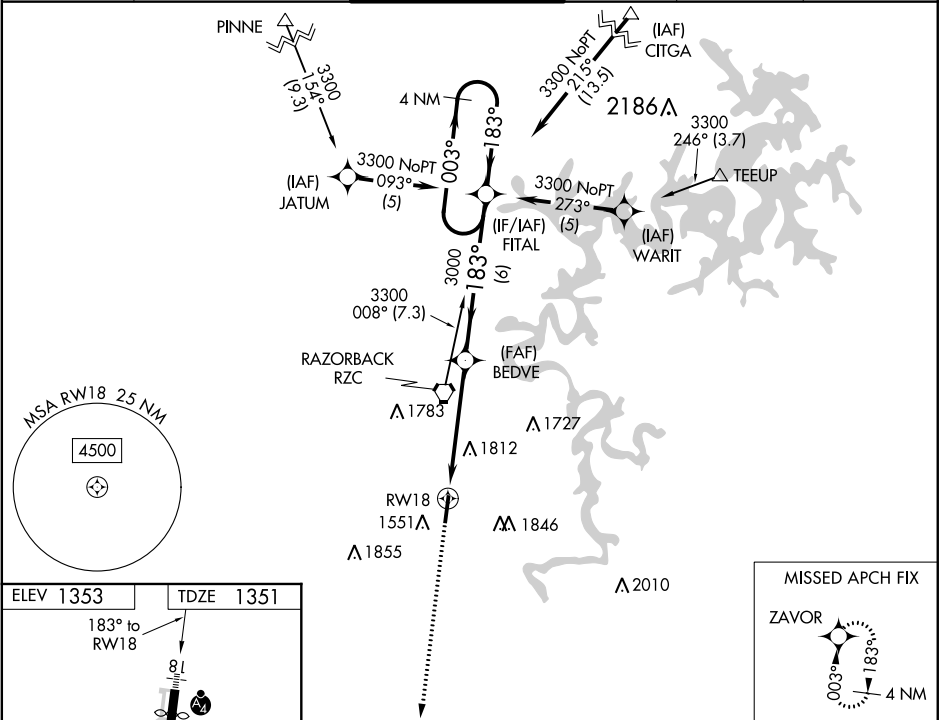


WAAS Ch <b>70312</b> <b>W18A</b>	APP CRS <b>183°</b>	Rwy Idg <b>4939</b> TDZE <b>1351</b> Apt Elev <b>1353</b>
--	------------------------	---

RNAV (GPS) RWY 18  
SPRINGDALE MUNI (ASG)

<p><b>NA</b> DME/DME RNP-0.3 NA. Circling NA east of Rwy 18-36. When local altimeter setting not received, use Fayetteville/Drake Field altimeter setting and increase all DA 39 feet and all MDA 40 feet; increase LPV all Cats and LNAV Cat C/D visibility <math>\frac{1}{8}</math> mile, Circling Cat C/D visibility <math>\frac{1}{4}</math> mile. For inoperative MALSF, increase LPV all Cats visibility to 1 mile, LNAV Cat C/D visibility to 2 miles. For inoperative MALSF when using Fayetteville/Drake Field altimeter setting, increase LPV all Cats visibility to <math>1\frac{1}{8}</math> mile, LNAV Cat C visibility to <math>2\frac{1}{4}</math> mile. VDP NA when using Fayetteville/Drake Field altimeter setting. Helicopter visibility reduction below <math>\frac{3}{4}</math> SM NA.</p>	<p>MALSF</p> 	<p>MISSED APPROACH: Climb to 3800 direct ZAVOR and hold.</p>
---	--	--

AWOS-3 <b>124.675</b>	RAZORBACK APP CON * <b>126.6 305.2</b>	SPRINGDALE TOWER * <b>118.2 (CTAF) 0</b>	GND CON <b>121.6</b>	REIL 18, 36 <b>122.8 0</b>	UNICOM <b>122.95</b>
--------------------------	---	---	-------------------------	-------------------------------	-------------------------



3800 ↑	ZAVOR ✦	4 NM Holding Pattern			
* LNAV only	* 2.2 NM to RW18		BEDVE 3000	FITAL 003° → 3300 ← 183°	
RW18		3000		GP 3.00° TCH 45	
2.2 NM		2.8 NM		6 NM	
CATEGORY	A		B	C	D
LPV DA	1642- <sup>3</sup> / <sub>4</sub> 291 (300- <sup>3</sup> / <sub>4</sub> )				
LNAV/ VNAV DA	NA				
LNAV MDA	2080- <sup>3</sup> / <sub>4</sub> 729 (800- <sup>3</sup> / <sub>4</sub> )	2080-1 729 (800-1)	2080-1 <sup>7</sup> / <sub>8</sub> 729 (800-1 <sup>7</sup> / <sub>8</sub> )		
CIRCLING	2080-1 727 (800-1)	2080-2 727 (800-2)		2220-2 <sup>3</sup> / <sub>4</sub> 867 (900-2 <sup>3</sup> / <sub>4</sub> )	