

JONESBORO, ARKANSAS

AL-5265 (FAA)

20058

|  |                        |   |
|--|------------------------|---|
| WAAS<br>CH <b>50531</b><br><b>W31A</b> | APP CRS<br><b>315°</b> | Rwy Idg <b>4099</b><br>TDZE <b>258</b><br>Apt Elev <b>262</b> |
|--|------------------------|---|

RNAV (GPS) RWY 31  
JONESBORO MUNI (JBR)

RNP APCH.

**T** Straight-in Rwy 31 NA at night, Circling Rwy 31 NA at night. Rwy 31 helicopter visibility reduction below 1 SM NA. Circling NA northwest of Rwy 5-23. When local altimeter setting not received, use Walnut Ridge altimeter setting: increase all MDAs 60 feet and visibility LP Cat C/D ½ SM and LNAV Cat C/D ¼ SM.

**MISSED APPROACH:** Climb to 800 then climbing left turn to 2300 direct YIGUY and hold.

ASOS

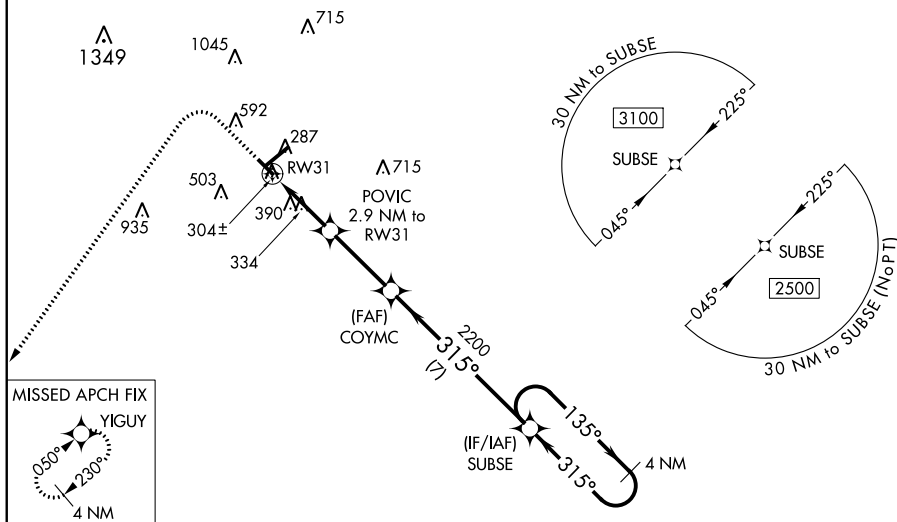
118.525

MEMPHIS CENTER

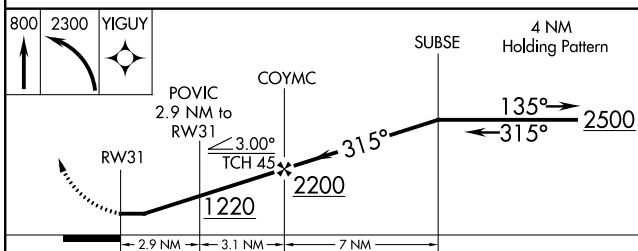
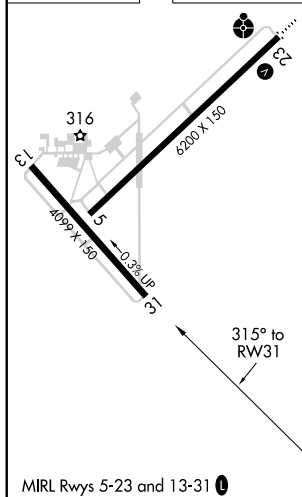
**120.075 289.4**

UN|COM

**123.0 (CTAF) L**



|          |  |          |
|----------|--|----------|
| ELEV 262 |  | TDZE 258 |
|----------|--|----------|



| CATEGORY | A                 | B           | C                      | D                    |
|----------|-------------------|-------------|------------------------|----------------------|
| LP MDA   | 600-1 342 (400-1) |             |                        |                      |
| INAV MDA | 640-1             | 382 (400-1) | 640-1½                 | 382 (400-1½)         |
| CIRCLING | 740-1             | 478 (500-1) | 740-1½<br>478 (500-1½) | 820-2<br>558 (600-2) |

JONESBORO, ARKANSAS

Amdt 1B 15AUG19

35°50'N-90°39'W

JONESBORO MUNI (JBR)

RNAV (GPS) RWY 31

SC-1, 03 DEC 2020 to 31 DEC 2020