

VOR/DME JBR	APP CRS	Rwy Idg	6200
108.6	227°	TDZE	262
Chan 23		Apt Elev	262

VOR RWY 23

JONESBORO MUNI (JBR)

⚠

⚠

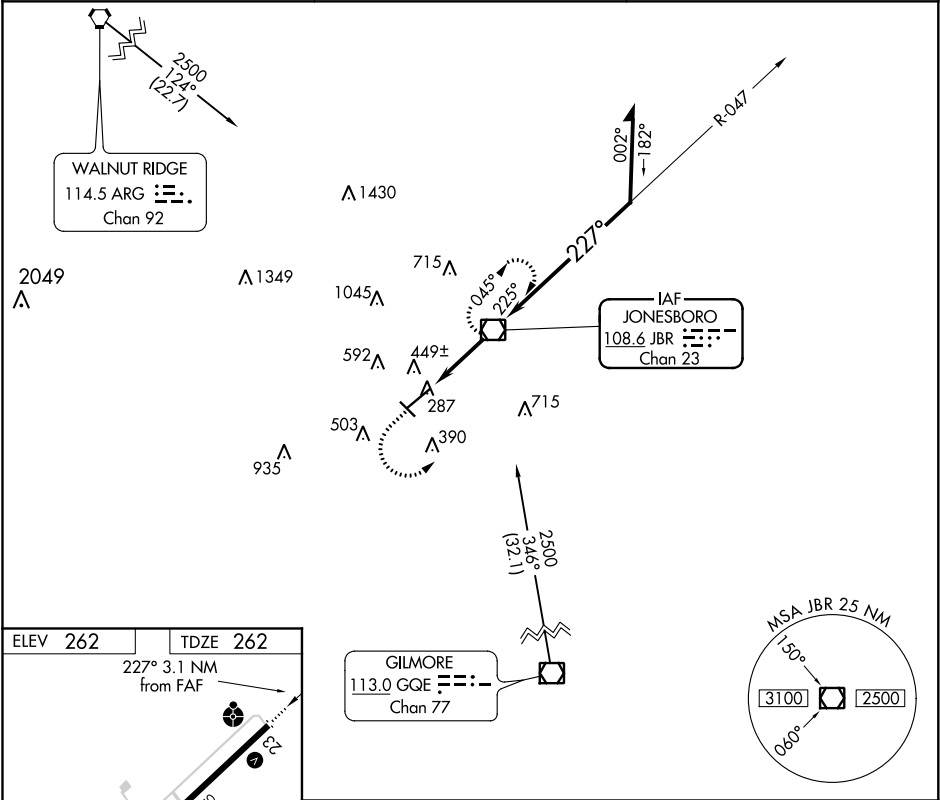
Circling Rwy 31 NA at night. Circling NA northwest of Rwy 5-23. Rwy 23 helicopter visibility reduction below ¾ SM NA. When local altimeter setting not received, use Walnut Ridge altimeter setting and increase all MDAs 60 feet and visibility S-23 Cat C/D ½ SM.

ODALS

⚠

MISSED APPROACH: Climb to 2000 then climbing left turn to 2300 direct JBR VOR/DME and hold.

ASOS 118.525	MEMPHIS CENTER 120.075 289.4	UNICOM 123.0 (CTAF) 0
-----------------	---------------------------------	--------------------------



ELEV 262		TDZE 262	
227° 3.1 NM from FAF		JBR VOR/DME 2500	
2000		2300	
JBR 1.9		JBR 3.1	
1.2		1.9 NM	
CATEGORY		A	B
S-23		700-¾ 438 (500-¾)	700-1½ 438 (500-1½)
CIRCLING		740-1 478 (500-1)	740-1½ 478 (500-1½)
Knots		60	90
Min:Sec		3:06	2:04
120		1:33	1:14
150		1:14	1:02
180		1:02	1:02