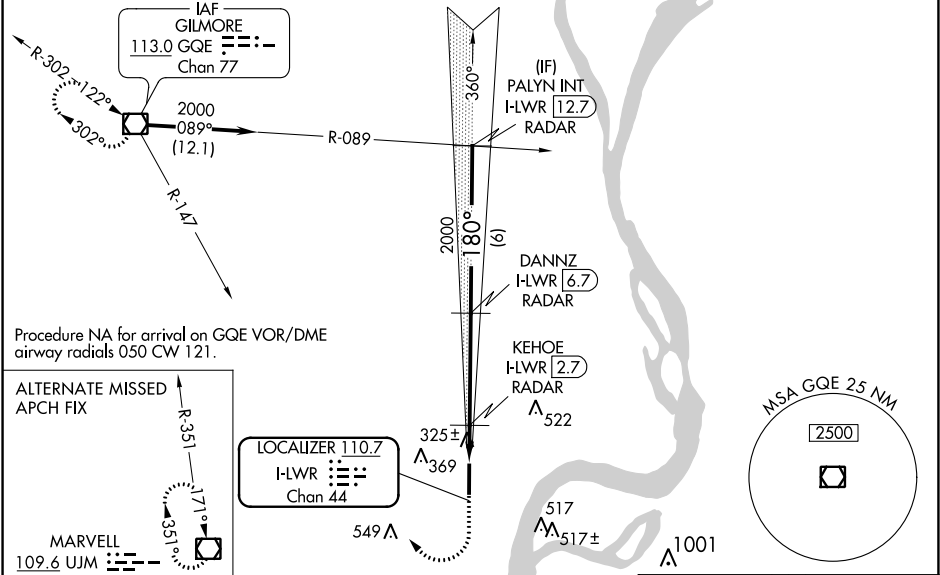


DME or RADAR required.		MALSR	<div>MISSED APPROACH: Climb to 1000 then climbing right turn to 2000 on GQE VOR/DME R-147 to GQE VOR/DME and hold.</div>
<div><div><div><div><div></div><div>NA</div></div></div><div>For inop ALS, increase S-LOC 17 Cat C/D visibility to 1½ SM and KEHOE FIX MINIMUMS S-LOC 17 Cats C/D visibility to 1 SM.</div></div></div>		<div><div><div><div></div><div>AS</div></div><div><div></div><div></div><div></div><div></div><div></div></div></div></div>	
ASOS 118.175	MEMPHIS APP CON 119.1 291.6	CLNC DEL 121.7	UNICOM 123.05 (CTAF) 0



Chan 33				ELEV 213		TDZE 213	
1000 ↑	2000 GQE R-147	GQE 	DANNZ I-LWR 6.7 RADAR		PALYN INT I-LWR 12.7 RADAR		
*LOC only.			KEHOE I-LWR 2.7 RADAR	2000	180°	2000	
			1.4 NM	4 NM	6 NM	GS 3.00° TCH 51	
CATEGORY	A		B		C		D
S-ILS 17	413-½ 200 (200-½)						
S-LOC 17	680-½ 467 (500-½)		680-1 467 (500-1)				
CIRCLING	680-1 467 (500-1)		680-1½ 467 (500-1½)		780-2 567 (600-2)		
KEHOE FIX MINIMUMS							
S-LOC 17	580-½ 367 (400-½)		580-5/8 367 (400-5/8)				
CIRCLING	640-1 427 (500-1)		680-1 467 (500-1)		680-1½ 467 (500-1½)		780-2 567 (600-2)
MIRL Rwy 17-35 0							
REIL Rwy 35 0							
FAF to MAP 5.5 NM							
Knots	60	90	120	150	180		
Min:Sec	5:30	3:40	2:45	2:12	1:50		