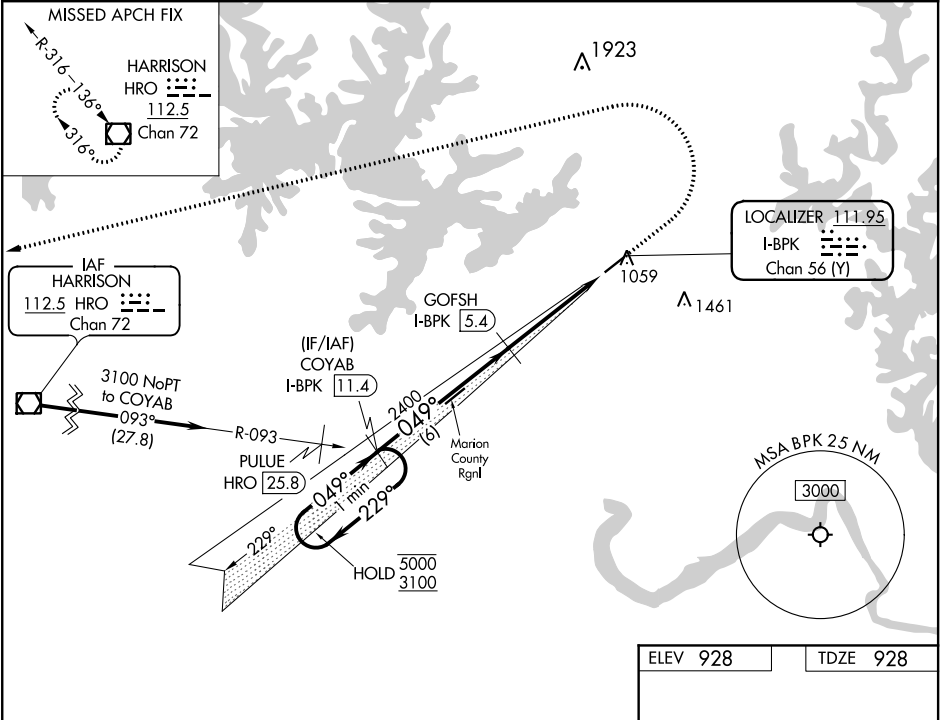


LOC/DME I-BPK <b>111.95</b> Chan <b>56(Y)</b>	APP CRS <b>049°</b>	Rwy Idg <b>5000</b> TDZE <b>928</b> Apt Elev <b>928</b>	ILS or LOC RWY 5 BAXTER COUNTY (BPK)
---	------------------------	---	---

DME required.	MISSED APPROACH: Climb to 1800 then climbing left turn to 3500 direct HRO VOR/DME and hold.
Circling NA for Cat C, southeast of Rwy 5-23. Circling to Rwy 23 NA at night.	

ASOS <b>133.975</b>	MEMPHIS CENTER <b>126.85 281.55</b>	GCO <b>121.72</b>	UNICOM <b>123.0(CTAF)</b>
------------------------	--	----------------------	------------------------------



VGSI and ILS glidepath not coincident (VGSI Angle 3.00/TCH 38).		1800	3500	HRO
One Minute Holding Pattern				
COYAB I-BPK 11.4		*LOC only.		
5000 229°		*I-BPK 1.8		
3100 049°		I-BPK 0.9		
GS 3.00° TCH 44				
6 NM		049° 4.5 NM from FAF		
3.6 NM		5000 X 75 0.3% UP		
0.9 NM				
CATEGORY	A	B	C	D
S-ILS 5	1178-3/4	250 (300-3/4)		NA
S-LOC 5	1260-1	332 (400-1)		NA
CIRCLING	1380-1 452 (500-1)	1400-1 472 (500-1)	1420-1 1/2 492 (500-1 1/2)	NA