

APP CRS	Rwy Idg	5000
229°	TDZE	919
	Apt Elev	928

RNAV (GPS) RWY 23

BAXTER COUNTY (BPK)

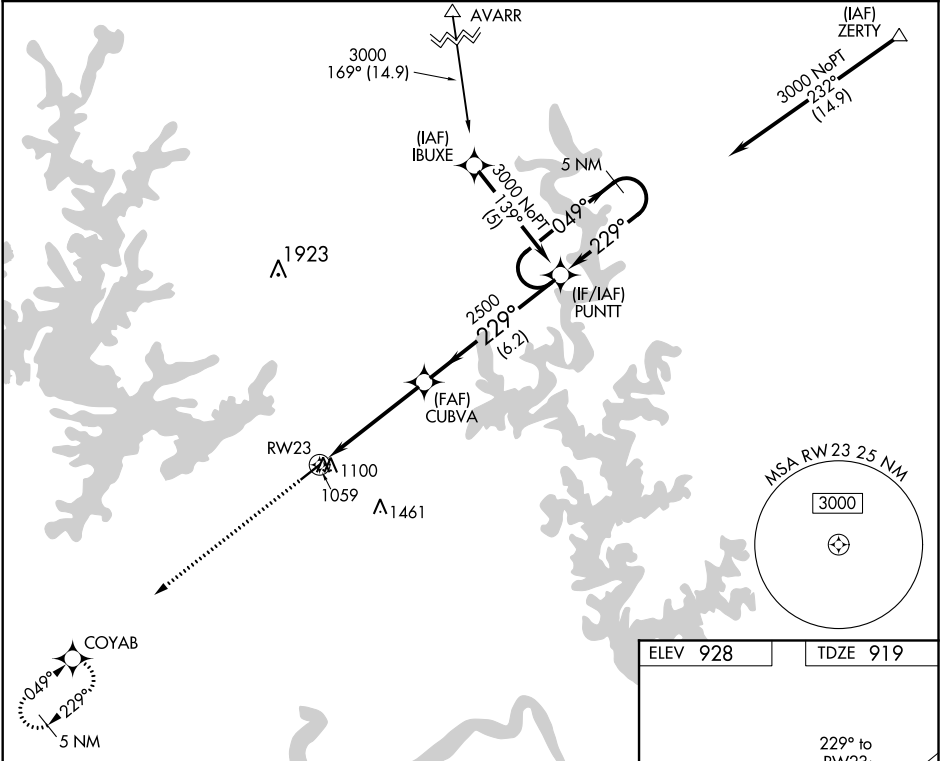
RNP APCH.

▼

Rwy 23 helicopter visibility reduction below 1 SM NA. When local alimeter setting not received, use Hippien alimeter setting and increase all MDAs 60 feet. Circling NA for Cat C, southeast of Rwy 5-23. Straight-in Rwy 23 NA at night, Circling Rwy 23 NA at night.

MISSED APPROACH: Climb to 3100 direct COYAB and hold.

ASOS 133.975	MEMPHIS CENTER 126.85 281.55	GCO 121.72	UNICOM 123.0 (CTAF) 0
-----------------	---------------------------------	---------------	--------------------------



3100 COYAB

↑

★

VGSI and descent angles not coincident (VGSI Angle 4.00/TCH 46).

PUNTT

5 NM Holding Pattern

049° →

← 229°

3000

CUBVA

229°

2500

3.04°

TCH 45

4.8 NM

6.2 NM

RWY23

CATEGORY	A	B	C	D
LNVA MDA	1360-1	441 (500-1)	1360-1 3/8 441 (500-1 3/8)	NA
CIRCLING	1400-1	472 (500-1)	1420-1 1/2 492 (500-1 1/2)	NA

ELEV 928

TDZE 919

229° to RWY23

5000 X 75

0.3% UP

★

REIL Rwy 5 0

MIRL Rwy 5-23 0

SC-1, 03 DEC 2020 to 31 DEC 2020

SC-1, 03 DEC 2020 to 31 DEC 2020