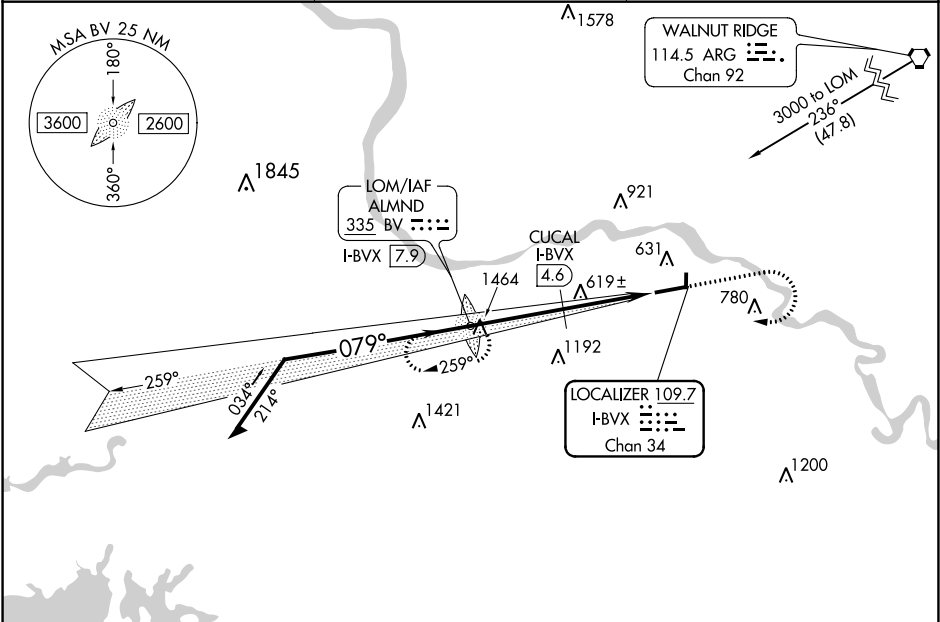


LOC/DME I-BVX 109.7 Chan 34	APP CRS 079°	Rwy ldg 6002 TDZE 463 Apt Elev 465
---	------------------------	---

LOC RWY 8
BATESVILLE RGNL (BVX)

ADF required for procedure entry. ADF required.	MISSED APPROACH: Climb to 1200 then climbing right turn to 3000 direct ALMND LOM/7.9 DME and hold.
NA Circling NA N of Rwy 8-26.	

AWOS-3PT 126.375	MEMPHIS CENTER 126.85 281.55	UNICOM 122.8 (CTAF) 0
----------------------------	--	---------------------------------



ELEV 465		TDZE 463			
<div><div>Remain within 10 NM</div><div><div>3000</div><div>25°</div><div>079°</div><div>2700</div><div>1560</div><div>3.06°</div><div>TCH 45</div><div>3.4 NM</div><div>2.2 NM</div><div>1.2</div><div>1200</div><div>3000</div><div>BV</div><div>CUCAL I-BVX 4.6</div><div>I-BVX 2.4</div><div>I-BVX 1.2</div></div></div>					
CATEGORY	A	B	C	D	
S-8	1560-1¼ 1097 (1100-1¼)	1560-1½ 1097 (1100-1½)	1560-3	1097 (1100-3)	
CIRCLING	1560-1¼ 1095 (1100-1¼)	1560-1½ 1095 (1100-1½)	1560-3	1095 (1100-3)	
CUCAL FIX MINIMUMS (DME REQUIRED)					
S-8	880-1	417 (500-1)	880-1¼	417 (500-1¼)	
CIRCLING	980-1	515 (600-1)	980-1½ 515 (600-1½)	1040-2 575 (600-2)	
REIL Rws 8 and 26 0 MIRL Rwy 8-26 0					
FAF to MAP 6.8 NM					
Knots	60	90	120	150	180
Min:Sec	6:48	4:32	3:24	2:43	2:16

SC-1, 03 DEC 2020 to 31 DEC 2020

SC-1, 03 DEC 2020 to 31 DEC 2020