

WAAS CH 61337 W36A	APP CRS 356°	Rwy Idg TDZE 1471 Apt Elev 1477	5001 1471 1477
--	------------------------	---	---

RNAV (GPS) RWY 36

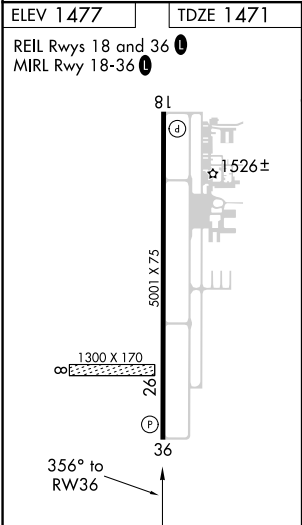
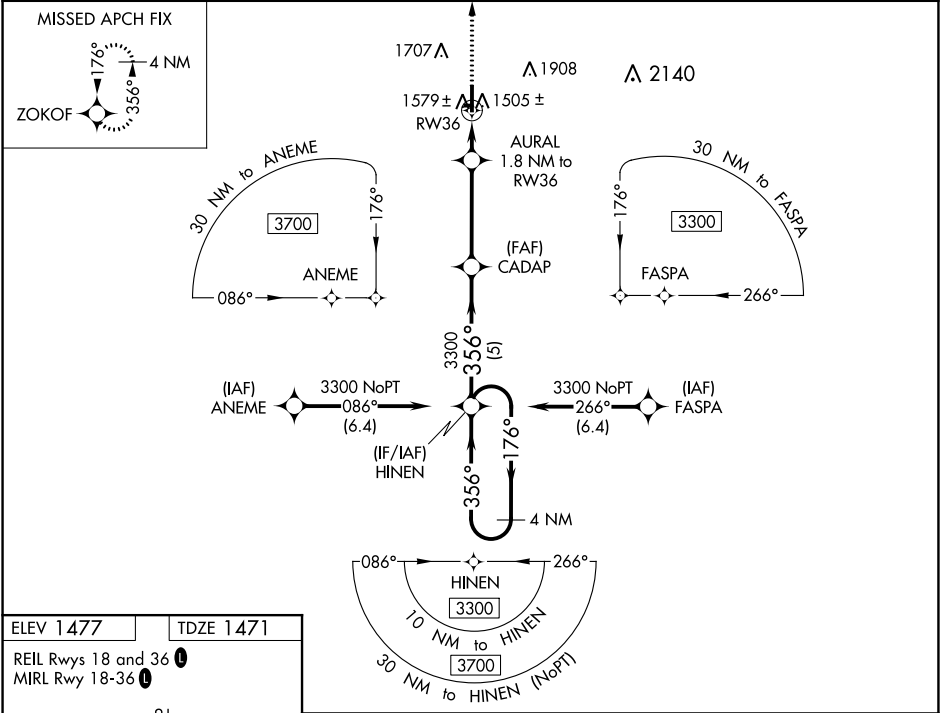
ALVA RGNL (AVK)

⚠

For uncompensated Baro-VNAV systems, LNAV/VNAV NA below -17°C (2°F) or above 54°C (130°F). DME/DME RNP-0.3 NA. When local altimeter setting not received, use Vance AFB altimeter setting and increase all DA 127 feet and all MDA 140 feet; increase LPV all Cats, LNAV/VNAV all Cats and LNAV Cat C visibility 3⁄8 mile and Circling Cat C visibility 1⁄2 mile. Baro-VNAV and VDP NA when using Vance AFB altimeter setting.

MISSED APPROACH:
Climb to 3300 direct ZOKOF and hold.

AWOS-3 121.125	VANCE APP CON ★ 126.75 346.325	UNICOM 122.8 (CTAF) 0
--------------------------	--	---------------------------------



3300 ZOKOF

*LNAV only.

CADAP 3300

HINEN

4 NM Holding Pattern

176° → 3300

← 356°

GP 3.00° TCH 40

1 NM 0.8 3.8 NM 5 NM

CATEGORY	A	B	C	D
LPV DA	1721-7⁄8		250 (300-7⁄8)	NA
LNAV/VNAV DA	1751-1		280 (300-1)	NA
LNAV MDA	1840-1		369 (400-1)	NA
CIRCLING	1980-1 503 (600-1)	2120-1 643 (700-1)	2220-2¼ 743 (800-2¼)	NA