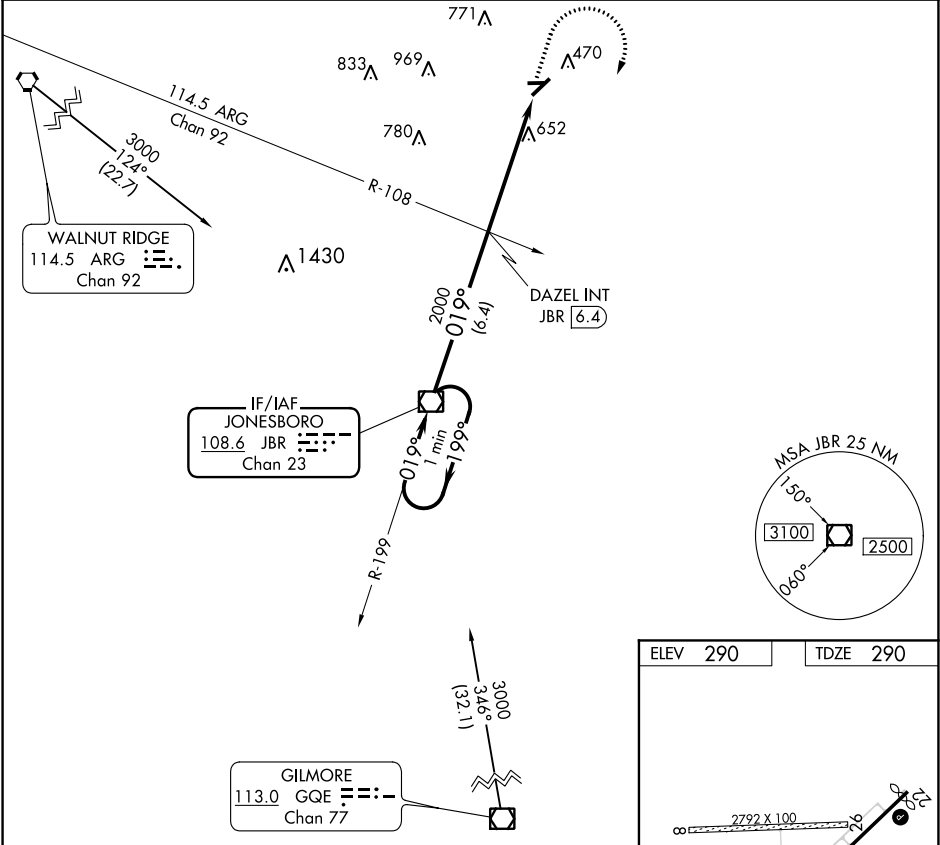


VOR/DME JBR	APP CRS	Rwy Idg	4011
108.6	019°	TDZE	290
Chan 23		Apt Elev	290

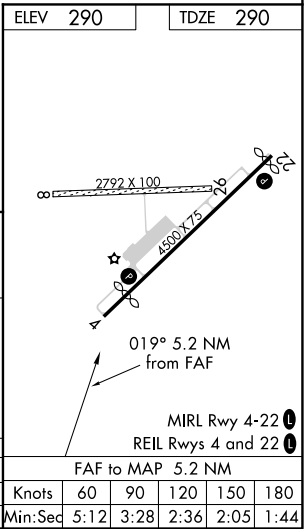
VOR RWY 4  
KIRK FIELD (PGR)

<p>▼ ▲ NA</p>	<p>Helicopter visibility reduction below 1 SM NA. Procedure NA at night. Use Jonesboro altimeter setting; when not received, use Walnut Ridge altimeter setting and increase all MDA 20 feet.</p>	<p>MISSED APPROACH: Climb to 1500 then climbing right turn to 3000 direct JBR VOR/DME and hold.</p>
-------------------	---	---

MEMPHIS CENTER 120.075 289.4	UNICOM 122.8 (CTAF) 0
---------------------------------	--------------------------



One Minute Holding Pattern		JBR VOR/DME	1500	3000	JBR
3000		019°	019°	3.00°	11.7
VGSi and descent angles not coincident (VGSi Angle 3.00/TCH 18).		2000	DAZEL INT JBR (6.4)	TCH 40	
		6.4 NM	5.2 NM		
CATEGORY	A	B	C	D	
S-4	980-1	690 (700-1)	NA		
CIRCLING	980-1	690 (700-1)	NA		



SC-1, 03 DEC 2020 to 31 DEC 2020

SC-1, 03 DEC 2020 to 31 DEC 2020