

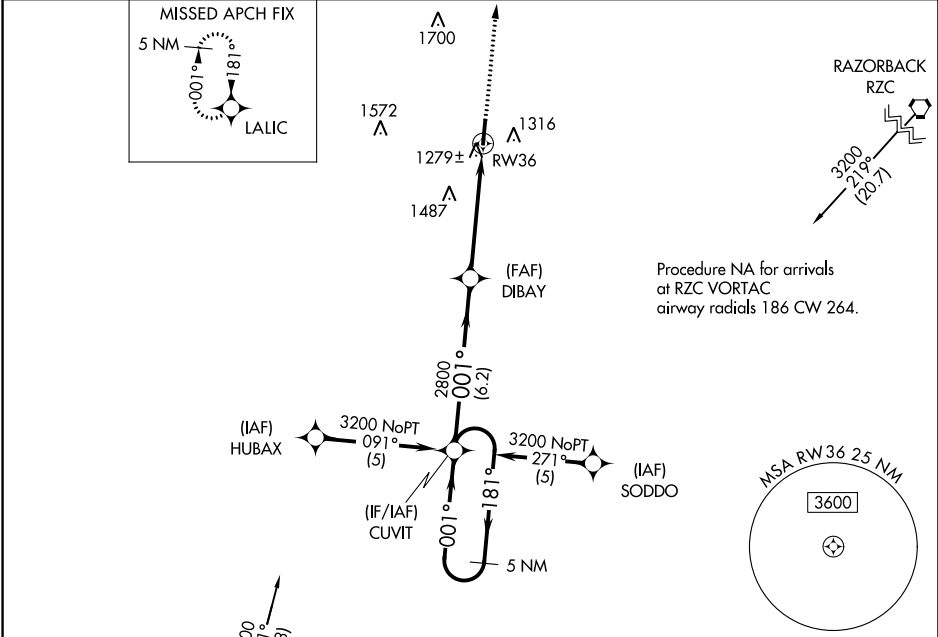
WAAS CH 63105 W36A	APP CRS 001°	Rwy Idg 4997 TDZE 1181 Apt Elev 1191
--	------------------------	---

RNAV (GPS) RWY 36
SMITH FIELD (SLG)

⚠ If local altimeter setting not received, use Northwest Arkansas National altimeter setting and increase all DAs/MDAs 40 feet. For uncompensated Baro-VNAV systems, LNAV/VNAV NA below -17°C (2°F) or above 46°C (114°F). DME/DME RNP-0.3 NA. Visibility reduction by helicopters NA. Baro-VNAV and VDP NA when using Northwest Arkansas National altimeter setting.

MISSED APPROACH:
Climb to 3100 direct
LALIC and hold.

AWOS-3PT 118.375	RAZORBACK APP CON ★ 121.0 244.575	UNICOM 122.8 (CTAF) ①
----------------------------	---	---------------------------------



5 NM Holding Pattern

CUVIT

DIBAY

3200 ← 181° 001° →

GP 3.00° TCH 52

2800

6.2 NM 3.5 NM 1.4

3100 LALIC

*1.4 NM to RW36 *LNAV only.

RW36

CATEGORY	A	B	C	D
LPV DA	1431-1 250 (300-1)			
LNAV/VNAV DA	1549-1¼ 368 (400-1¼)			
LNAV MDA	1660-1 479 (500-1)	1660-1¼ 479 (500-1¼)	1660-1½ 479 (500-1½)	
CIRCLING	1660-1 469 (500-1)	1720-1 529 (600-1)	1720-1½ 529 (600-1½)	1760-2 569 (600-2)

ELEV 1191 TDZE 1181

2261

81

4997 X 75

36

001° to RW36

MIRL Rwy 18-36 ①

REIL Rwy 18 and 36 ①

SC-1, 03 DEC 2020 to 31 DEC 2020

SC-1, 03 DEC 2020 to 31 DEC 2020