

WAAS CH <b>78227</b> <b>W01A</b>	APP CRS <b>007°</b>	Rwy Idg <b>6502</b> TDZE <b>124</b> Apt Elev <b>130</b>
--	------------------------	---

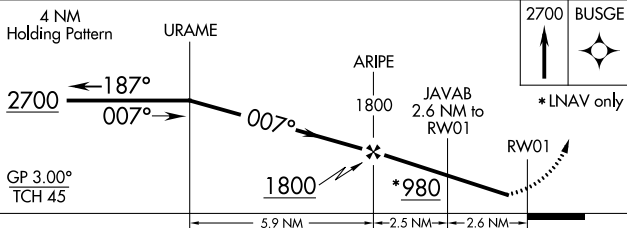
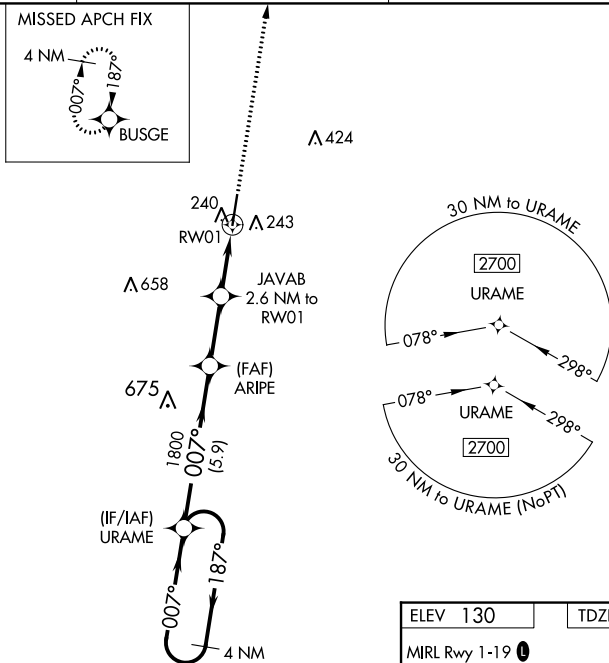
# RNAV (GPS) RWY 1

**V** Baro-VNAV NA when using El Dorado altimeter setting. For uncompensated Baro-VNAV systems, LNAV/VNAV NA below -15°C (5°F) or above 43°C (109°F). DME/DME RNP-0.3 NA.  
**A** Visibility reduction by helicopters NA. When local altimeter setting not received, use El Dorado altimeter setting and increase all DA/MDA 80 feet, LPV and LNAV/VNAV all Cats visibility ¼ mile and LNAV Cats C and D visibility ⅜ mile. When VGSI inop, Straight-in/Circling Rwy 1 procedure NA at night. When VGSI inop, Circling Rwy 19 NA at night.

**MISSED APPROACH:**  
Climb to 2700 direct  
BUSGE and hold.

AWOS-3  
125.2

FORT WORTH CENTER  
128.2 269.1

UNICOM  
122.7 (CTAF) **L**

CATEGORY	A	B	C	D
LPV DA	430-1 306 (300-1)			
LNAV/ VNAV DA	422-1 298 (300-1)			
LNAV MDA	500-1 376 (400-1)			
CIRCLING	560-1 430 (500-1)	580-1 450 (500-1)	580-1½ 450 (500-1½)	680-2 550 (600-2)