

WAAS CH <b>56627</b> <b>W19A</b>	APP CRS <b>187°</b>	Rwy Idg TDZE <b>130</b> Apt Elev <b>130</b>
--	------------------------	---

RNAV (GPS) RWY 19

HARRELL FIELD (CDH)

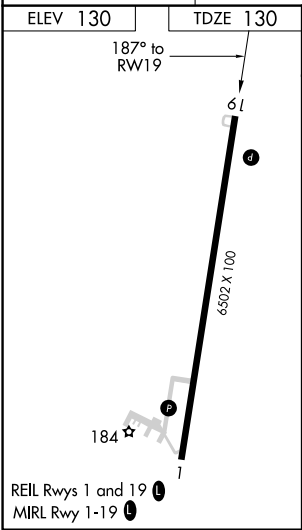
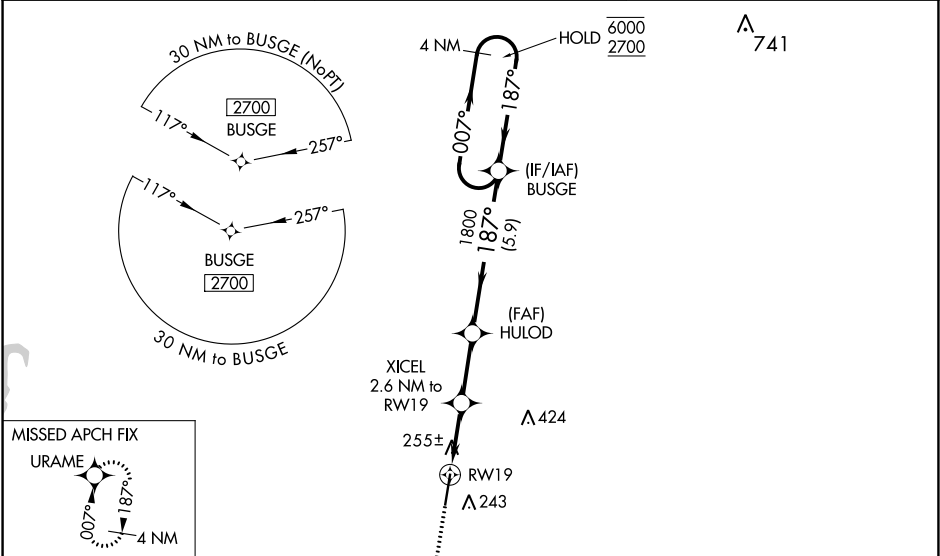
RNP APCH.

⚠

Rwy 19 helicopter visibility reduction below ¾ SM NA. Baro-VNAV NA when using El Dorado altimeter setting. For uncompensated Baro-VNAV systems, LNAV/VNAV NA below -15°C or above 54°C. When local altimeter setting not received, use El Dorado altimeter setting and increase all DA/MDA 80 feet, and visibility LPV all Cats ½ SM and LNAV Cats C and D ¼ SM.

MISSED APPROACH: Climb to 2700 direct URAM and hold.

AWOS-3 <b>125.2</b>	FORT WORTH CENTER <b>128.2 269.1</b>	UNICOM <b>122.7</b> (CTAF) <b>0</b>
------------------------	---	--



ELEV 130	TDZE 130
187° to RW19	61
6502 x 100	184
REIL Rwy 1 and 19	MRL Rwy 1-19

2700	URAM	4 NM Holding Pattern
*LNAV only	XICEL 2.6 NM to RW19	HULOD 1800
RW19	1000*	1800
2.6 NM	2.5 NM	5.9 NM
GP 3.00°	TCH 43	

CATEGORY	A	B	C	D
LPV DA	440-1	310 (400-1)		
LNAV/VNAV DA	426-1	296 (300-1)		
LNAV MDA	520-1	390 (400-1)	520-1½	390 (400-1½)
CIRCLING	560-1 430 (500-1)	580-1 450 (500-1)	580-1½ 450 (500-1½)	680-2 550 (600-2)

SC-1, 03 DEC 2020 to 31 DEC 2020

SC-1, 03 DEC 2020 to 31 DEC 2020