

WAAS  
CH **58302**  
**W18A**

APP CRS  
**177°**

Rwy Idg **5199**  
TDZE **1182**  
Apt Elev **1182**

**RNAV (GPS) RWY 18**

UNIVERSITY OF OKLAHOMA WESTHEIMER (OUN)

RNP APCH.  

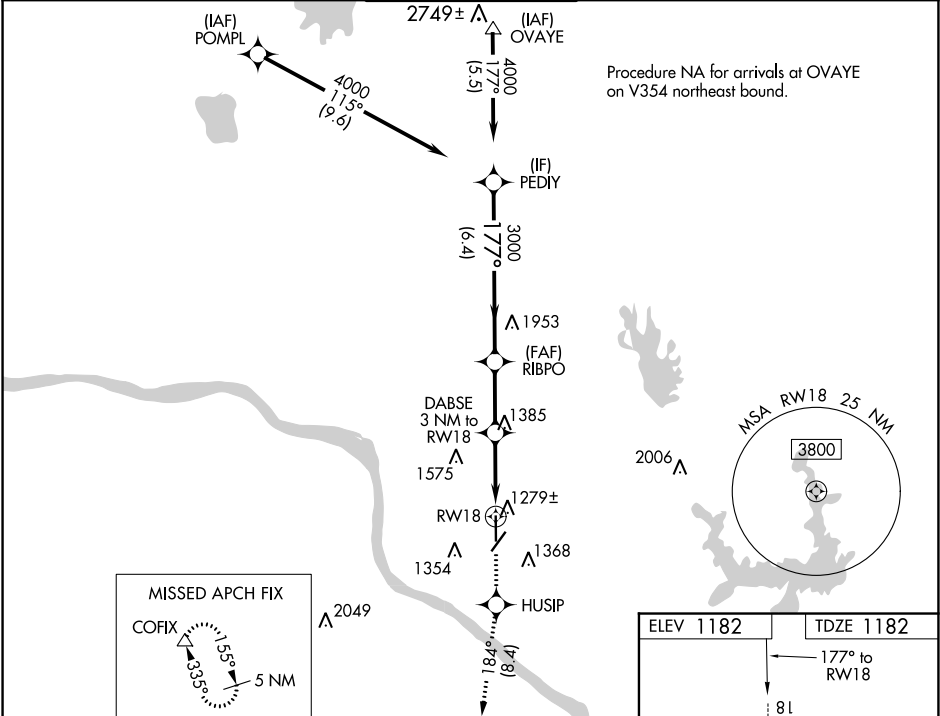
For uncompensated Baro-VNAV systems, LNAV/VNAV NA below -17°C or above 54°C. For inop ALS, increase LNAV/VNAV all Cats visibility to ½ SM. Circling NA southeast of Rwy 3-21.

MALSR  

AS

MISSED APPROACH: Climb to 3000 direct HUSIP and track 184° to COFIX and hold.

AWOS-3 <b>119.55</b>	OKE CITY APP CON <b>120.45 288.325</b>	WESTHEIMER TOWER★ <b>118.0 (CTAF) 0</b>	GND CON <b>121.6</b>	UNICOM <b>122.95</b>
-------------------------	---	--	-------------------------	-------------------------



VGSI and RNAV glidepath not coincident (VGSI Angle 3.00/TCH 55).

PEDIY

RIBPO

DABSE 3 NM to RWY 18

HUSIP

COFIX

4000

3000

2180

1368

1182

177°

184°

GP 3.00°

TCH 51

6.4 NM

2.6 NM

1.7 NM

1.3 NM

\*1.3 NM to RWY 18

\*2180

\*LNAV only.

CATEGORY	A	B	C	D
LPV DA	1382-1/2 200 (200-1/2)			
LNAV/DA VNAV	1490-1/2 308 (400-1/2)			
LNAV MDA	1640-1/2 458 (500-1/2)	1640-7/8 458 (500-7/8)		
CIRCLING	1660-1 478 (500-1)	1940-2 758 (800-2 1/4)	1940-2 758 (800-2 1/2)	

ELEV 1182

TDZE 1182

177° to RWY 18

81

5199 X 100

17.88 X 101

36

21

MRL Rwy 3-21 and 18-36

REIL Rwy 36