

WAAS CH 77531 W03A	APP CRS 033°	Rwy Idg 4748 TDZE 1177 Apt Elev 1182
--	------------------------	---

RNAV (GPS) RWY 3

UNIVERSITY OF OKLAHOMA WESTHEIMER (OUN)

▼

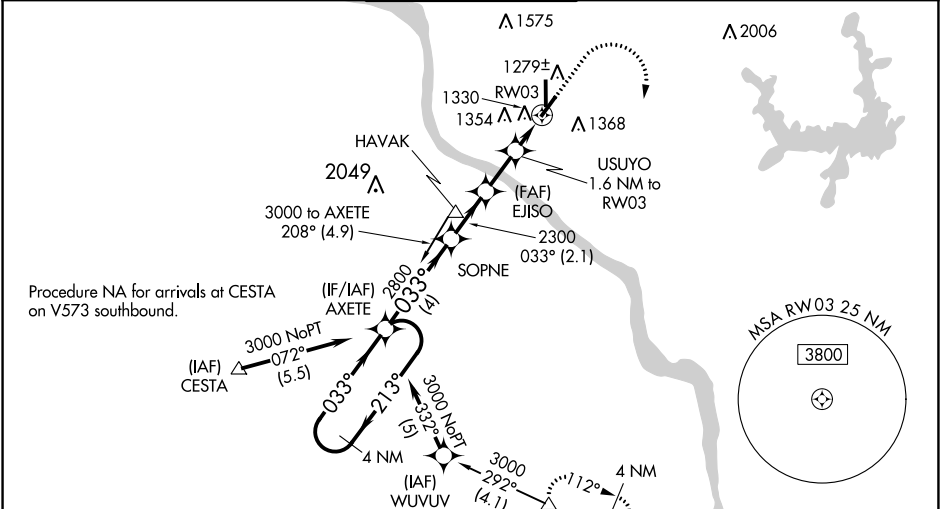
▲

Baro-VNAV NA when using Will Rogers World altimeter setting. For uncompensated Baro-VNAV systems, LNAV/VNAV NA below -17°C (2°F) or above 54°C (130°F). DME/DME RNP-0.3 NA. When local altimeter setting not received, use Will Rogers World altimeter setting and increase LPV DA to 1501 feet, LNAV/VNAV DA to 1544 feet; increase all MDA 60 feet, increase LPV visibility to ¾ mile all Cats, increase LNAV/VNAV visibility to 1 mile all Cats, and increase LNAV Cat C/D visibility to 1 ½ mile. For inop MALS, increase LPV all Cats visibility to 1 mile, LNAV/VNAV Cat D visibility to 1 ½ mile, LNAV Cat C/D visibility to 1 ½ mile. For inop MALS when using Will Rogers World altimeter setting, increase LPV all Cats visibility to 1 ½ mile, LNAV/VNAV Cat D visibility to 1 ¼ mile, LNAV Cat D visibility to 1 ½ mile. Circling NA southeast of Rwy 3 and 21.

MALS
A1

MISSED APPROACH:
Climb to 1700 then climbing right turn to 3100 direct WETIX and hold.

AWOS-3 119.55	OKE CITY APP CON 120.45 288.325	WESTHEIMER TOWER* 118.0 (CTAF) 0	GND CON 121.6	UNICOM 122.95
-------------------------	---	--	-------------------------	-------------------------



4 NM Holding Pattern

AXETE

SOPNE

EJISO

USUYO

1700

3100

WETIX

GP 3.00° TCH 40

3000

213°

033°

033°

2800

2300

1720

2300

1.6 NM to RW03

RW03

*LNAV only

4 NM

2.1 NM

1.8 NM

1.6 NM

CATEGORY	A	B	C	D
LPV DA		1460-¾	283 (300-¾)	
LNAV/VNAV DA		1503-7/8	326 (400-7/8)	
LNAV MDA	1580-¾	403 (400-¾)	1580-1	403 (400-1)
CIRCLING	1660-1	478 (500-1)	1940-2¼ 758 (800-2¼)	1940-2½ 758 (800-2½)

ELEV 1182

TDZE 1177

81

5199 X 100

4748 X 100

36

21

033° to RW03

MIRL Rwy 3-21 and 18-36

REIL Rwy 36

SC-1, 03 DEC 2020 to 31 DEC 2020

SC-1, 03 DEC 2020 to 31 DEC 2020