

|  |                        |   |   |
|--|------------------------|---|---|
| WAAS<br>CH <b>82729</b><br><b>W36A</b> | APP CRS<br><b>357°</b> | Rwy Idg<br>TDZE <b>1182</b><br>Apt Elev <b>1182</b> | <b>5199</b><br><b>1182</b><br><b>1182</b> |
|--|------------------------|---|---|

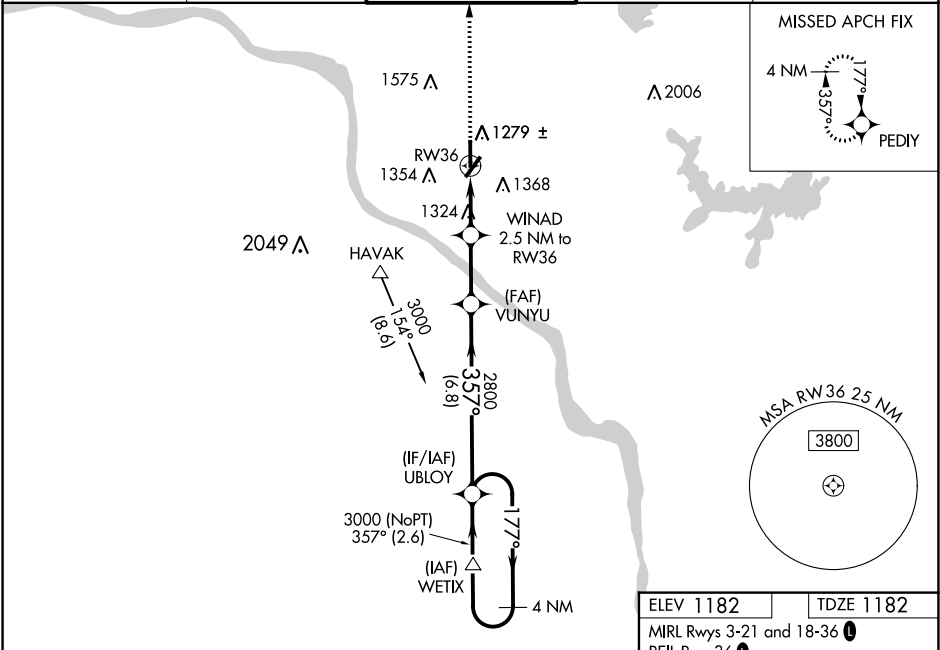
RNAV (GPS) RWY 36

UNIVERSITY OF OKLAHOMA WESTHEIMER (OUN)

**⚠** For uncompensated Baro-VNAV systems, procedure NA below -17°C (2°F) or above 54°C (130°F). Baro-VNAV and VDP NA when using Will Rogers World altimeter setting. DME/DME RNP-0.3 NA. When local altimeter setting not received, use Will Rogers World altimeter setting and increase LPV DA to 1473 feet, LNAV/VNAV DA to 1541 feet; increase all MDA 60 feet, increase LPV visibility all Cats to 1 mile, LNAV/VNAV visibility all Cats to 1¼ mile, and increase Circling Cat C/D visibility ¼ mile. Circling NA southeast of Rwy 3 and 21.

**MISSED APPROACH:**  
Climb to 4000 direct PEDIY and hold.

|                         |   |   |                         |                         |
|-------------------------|---|---|-------------------------|-------------------------|
| AWOS-3<br><b>119.55</b> | OKE CITY APP CON<br><b>120.45 288.325</b> | WESTHEIMER TOWER ★<br><b>118.0 (CTAF) 0</b> | GND CON<br><b>121.6</b> | UNICOM<br><b>122.95</b> |
|-------------------------|---|---|-------------------------|-------------------------|



|                      |        |             |                 |                 |
|----------------------|--------|-------------|-----------------|-----------------|
| 4 NM Holding Pattern |        | UBLOY       | 4000            | PEDIY           |
| 3000 ← 177°          |        | 357° →      | 357°            |                 |
| GP 3.00°             |        | TCH 40      |                 |                 |
| 2800                 |        | VUNYU       | WINAD           |                 |
| 2800                 |        | 2800        | 2.5 NM to RW36  |                 |
| *2000                |        |             | *1.3 NM to RW36 |                 |
| 6.8 NM               |        | 2.5 NM      | 1.2 NM          | 1.3 NM          |
| CATEGORY             | A      | B           | C               | D               |
| LPV DA               |        | 1432-7/8    | 250 (300-7/8)   |                 |
| LNAV/VNAV DA         |        | 1500-1 1/8  | 318 (400-1 1/8) |                 |
| LNAV MDA             | 1640-1 | 458 (500-1) | 1640-1 3/8      | 458 (500-1 3/8) |
| CIRCLING             | 1660-1 | 478 (500-1) | 1940-2 1/4      | 1940-2 1/2      |
|                      |        |             | 758 (800-2 1/4) | 758 (800-2 1/2) |

