

APP CRS	Rwy Idg	<b>5004</b>
<b>216°</b>	TDZE	<b>717</b>
	Apt Elev	<b>717</b>

RNAV (GPS) RWY 22  
SHARP COUNTY RGNL (CVK)

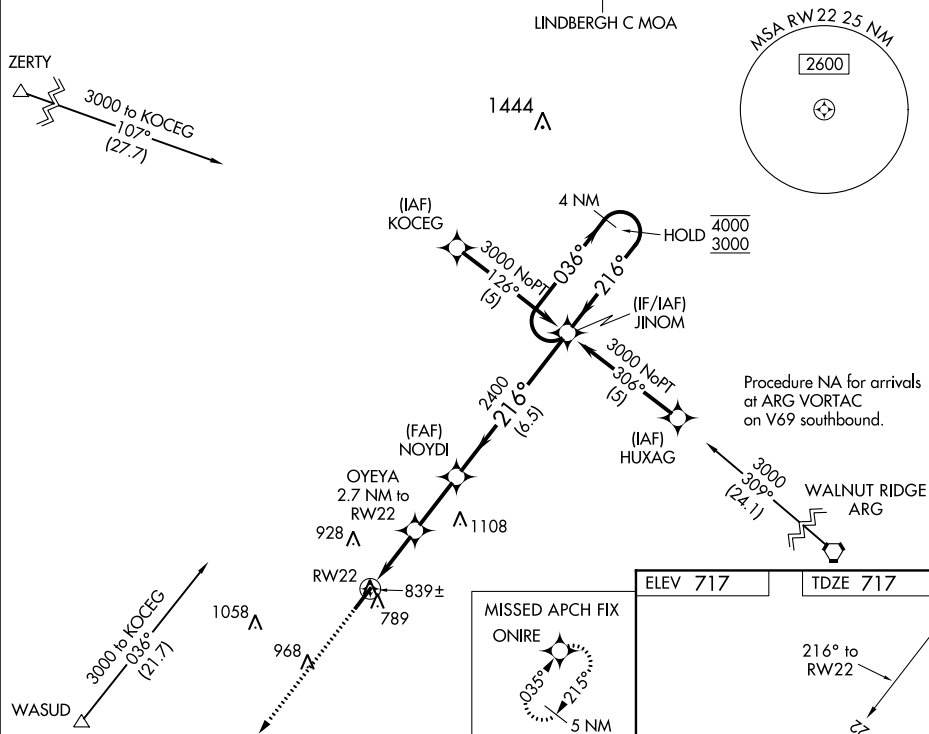
RNP APCH.

**T** Rwy 22 helicopter visibility reduction below  $\frac{3}{4}$  SM NA. Circling Rwy 4 NA at night. Use Walnut Ridge Rgnl altimeter setting, when not received, use Jonesboro Muni setting and increase all MDAs 60 feet, increase LNAV Cat C visibility  $\frac{1}{8}$  SM.

**MISSED APPROACH:** Climb to 3000 direct ONIRE and hold.

ARG AWOS-3PT  
**135.925**

MEMPHIS CENTER  
120.075 289.4

UNICOM  
122.7 (CTAF) **L**

3000 ONIRE VGS and RNAV glidepath not coincident (VGS Angle 3.00/TCH40). 4 NM Holding Pattern

JINOM

OYEYA 2.7 NM to RW22

NOYDI

036° 4000

216° 3000

3.04° TCH 40

1600 2400

RW22

2.7 NM 2.4 NM 6.5 NM

CATEGORY	A	B	C	D
LNAV MDA	1360-1	643 (700-1)	1360-1 $\frac{7}{8}$ 643 (700-1 $\frac{7}{8}$ )	NA
CIRCLING	1400-1	683 (700-1)	1400-2 683 (700-2)	NA

MIRL Rwy 4-22 **L**