

APP CRS

Rwy Idg

5158

TDZE

700

Apt Elev

716

036°

RNAV (GPS) RWY 4

SHARP COUNTY RGNL (CVK)

RNP APCH.

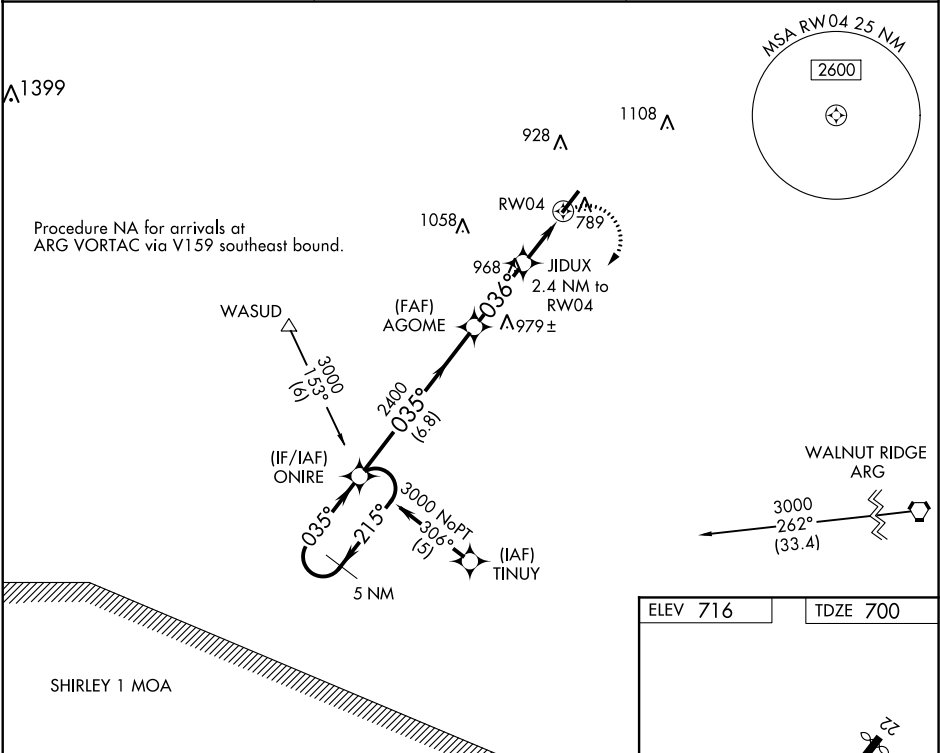
▼

▲ NA

Use Walnut Ridge altimeter setting; if not received, use Jonesboro altimeter setting and increase all MDAs 60 feet. Rwy 4 helicopter visibility reduction below 1 SM NA. Straight-in Rwy 4 NA at night, Circling Rwy 4 NA at night.

MISSED APPROACH: Climbing right turn to 3000 direct ONIRE and hold.

ARG AWOS-3PT 135.925	MEMPHIS CENTER 120.075 289.4	UNICOM 122.7 (CTAF) 0
-------------------------	---------------------------------	--------------------------



5 NM Holding Pattern

ONIRE

Visual Segment - Obstacles.

3000 ONIRE

3000

215°

035°

035°

2400

036°

1460

6.8 NM

2.9 NM

2.4 NM

CATEGORY	A	B	C	D
LNAV MDA	1260-1	560 (600-1)	1260-1½ 560 (600-1½)	NA
CIRCLING	1400-1	684 (700-1)	1400-2 684 (700-2)	NA

5158X75

0.9% UP

036° to RW04

MIRL Rwy 4-22 0