

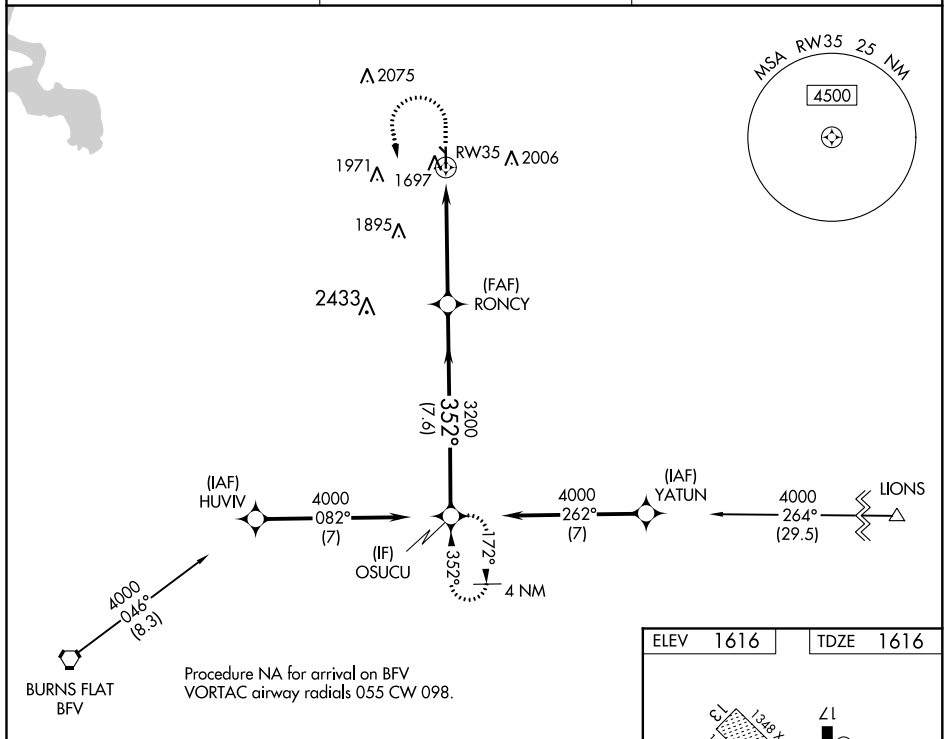
WAAS CH 70423 W35A	APP CRS 352°	Rwy Idg 4305 TDZE 1616 Apt Elev 1616
--	------------------------	---

RNAV (GPS) RWY 35
CLINTON RGNL (CLK)

⚠ DME/DME RNP-0.3 NA. For uncompensated Baro-VNAV systems, LNAV/VNAV NA below -12°C (111°F) or above 54°C (130°F). Circling NA to Rwy 13 and 31. When local altimeter setting not received, use Weatherford altimeter setting: Increase DA to 1902 and all visibilities ½ mile; increase all MDA 40 feet and visibility Cat C ¼ mile. Baro-VNAV and VDP NA when using Weatherford altimeter setting.

MISSED APPROACH: Climb to 2400 then climbing left turn to 4000 direct OSUCU and hold.

AWOS-3 119.225	FORT WORTH CENTER 128.4 269.37	UNICOM 122.8 (CTAF) 0
--------------------------	--	--



2400 4000 OSUCU

VGS and RNAV glidepath not coincident (VGS Angle 3.00/TCH 40)

OSUCU

4000

GP 3.00° TCH 40

3200

352°

3200

RW35

1.3 NM

3.6 NM

7.6 NM

RONCY

*LNAV only.

*1.3 NM to RW35

