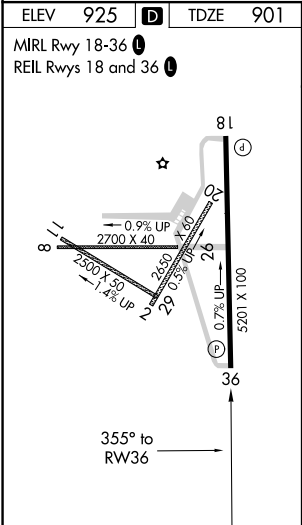
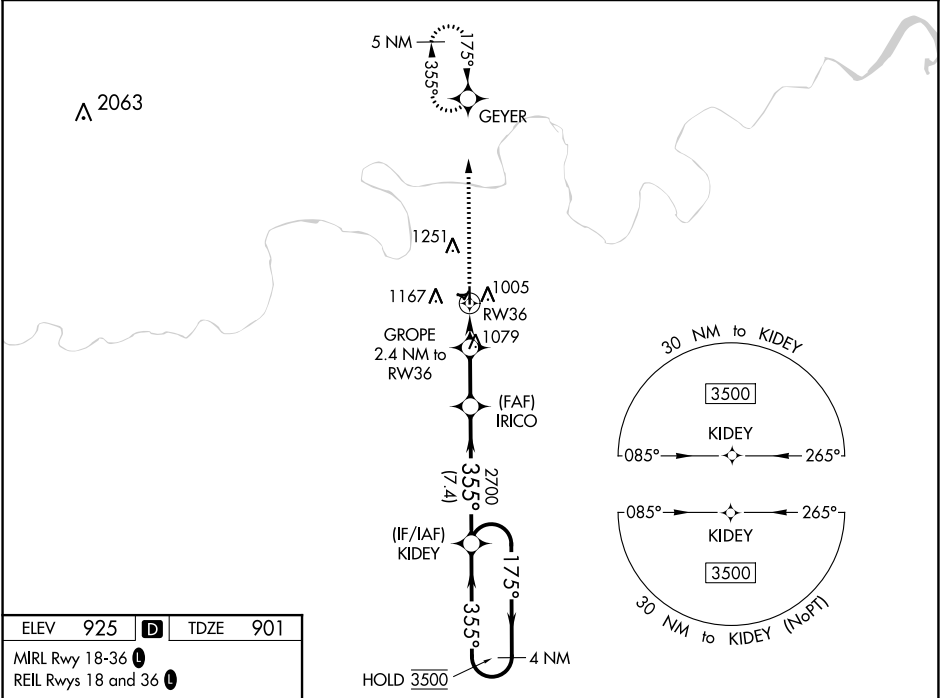


WAAS CH 90142 W36A	APP CRS 355°	Rwy Idg TDZE Apt Elev	4986 901 925
--	------------------------	-----------------------------	---

RNAV (GPS) RWY 36

CUSHING MUNI (CUH)

RNP APCH. <div><div></div>For uncompensated Baro-VNAV systems, LNAV/VNAV NA below -16°C or above 54°C. Circling NA to Rwy's 2, 8, 11, 20, 26, and 29.</div>		MISSED APPROACH: Climb to 3500 direct GEYER and hold, continue to climb-in-hold to 3500.
AWOS-3 118.25	KANSAS CITY CENTER 127.8 319.1	UNICOM 122.8 (CTAF) 0



3500 GEYER VGSB and RNAV glidepath not coincident.				
*LNAV only.		KIDEY 4 NM Holding Pattern		
GROPE 2.4 NM to RW36		IRICO 2700		
RW36 1680*		KIDEY 3500		
2.4 NM		3.2 NM		
7.4 NM		GP 3.00° TCH 50		
CATEGORY	A	B	C	D
LPV DA	1151-7/8 250 (300-7/8)			
LNAV/VNAV DA	1284-1 1/4 383 (400-1 1/4)			
LNAV MDA	1340-1 439 (500-1)		1340-1 1/4 439 (500-1 1/4)	
CIRCLING	1600-1 675 (700-1)		1600-2 675 (700-2)	
			1600-2 1/4 675 (700-2 1/4)	