

LOC/DME I-ORK 111.9 Chan 56	APP CRS 053°	Rwy Idg 5002 TDZE 541 Apt Elev 545
---	------------------------	---

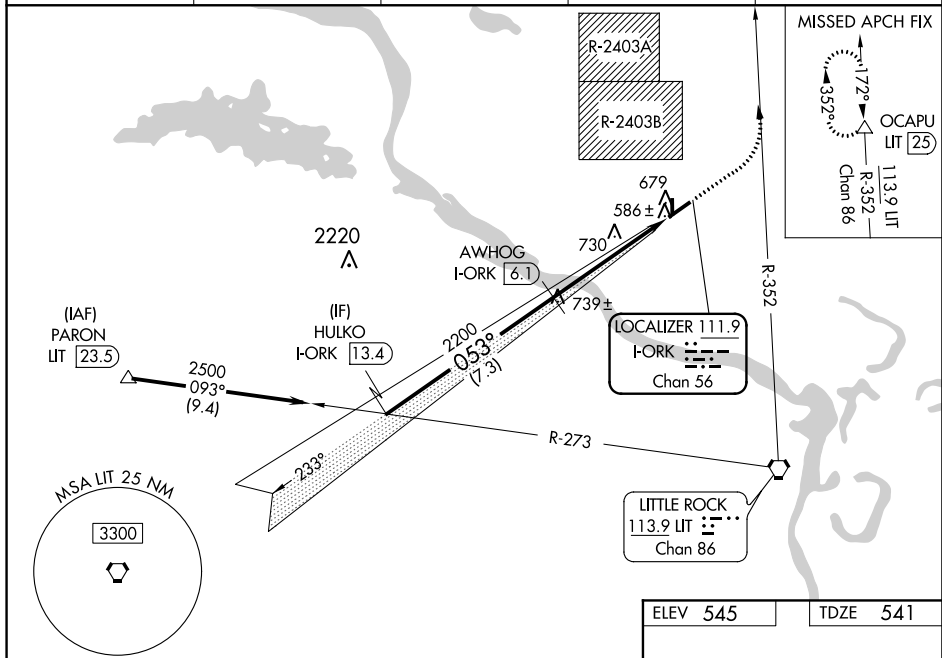
LOC/DME RWY 5
NORTH LITTLE ROCK MUNI (ORF)

DME and RADAR required.

T Use Bill and Hillary Clinton National/Adams Field altimeter setting; when not received, use Searcy altimeter setting and increase all MDAs 60 feet and visibility S-LOC 5 Cat C ½ SM. Circling NA for Cat C north of Rwy 5-23

MISSED APPROACH: Climb to 1700 then climbing left turn to 4000 on LIT VORTAC R-352 to OCAPU/25 DME and hold.

AWOS-3PT 123.775	LIT ASOS 125.65	LITTLE ROCK APP CON 119.5 306.2	CLNC DEL 121.6	UNICOM 123.075 (CTAF) 0
----------------------------	---------------------------	---	--------------------------	-----------------------------------



VGSI and descent angles not coincident (VGSI angle 3.00/TCH 49).

CATEGORY	A	B	C	D
S-LOC 5	980-1	439 (500-1)	980-1¼ 439 (500-1¼)	NA
CIRCLING	1040-1	495 (500-1)	1060-1½ 515 (600-1½)	NA

REIL Rwy 5, 17, and 23
MIRL Rwy 5-23 and 17-35