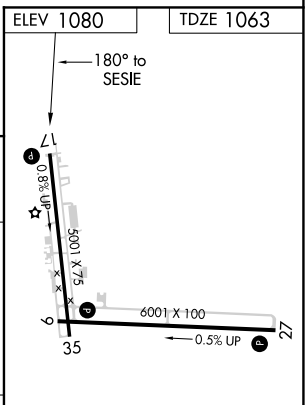
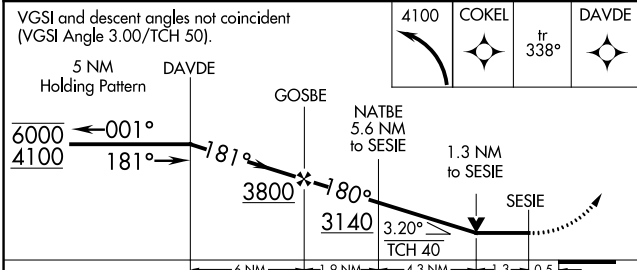
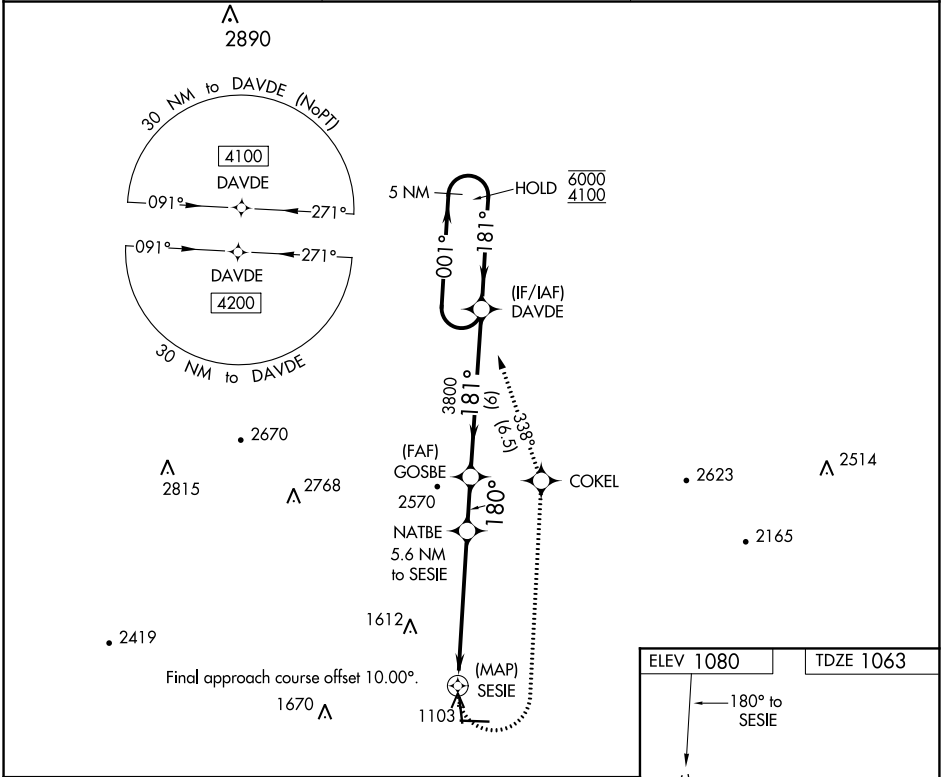


APP CRS <b>180°</b>	Rwy Idg <b>5001</b>
TDZE <b>1063</b>	
Apt Elev <b>1080</b>	

**RNAV (GPS) RWY 17**  
MENA INTERMOUNTAIN MUNI (MEZ)

RNP APCH. ▼ Circling Rwy 35 NA at night. ▲ Rwy 17 helicopter visibility reduction below ¾ SM NA.	MISSED APPROACH: Climbing left turn to 4100 direct COKEI and track 338° to DAVDE and hold.
--	--

AWOS-3 <b>118.025</b>	MEMPHIS CENTER <b>126.1 269.0</b>	UNICOM <b>122.8 (CTAF) 0</b>
--------------------------	--------------------------------------	---------------------------------



CATEGORY	A	B	C	D
LNVA MDA	1660-1	597 (600-1)	1660-1¾ 597 (600-1¾)	NA
CIRCLING	1840-1 760 (800-1)	2140-1½ 1060 (1100-1½)	2220-3 1140 (1200-3)	NA

MIRL Rwy 9-27 and 17-35  
REIL Rwy 9, 27 and 35

SC-1, 03 DEC 2020 to 31 DEC 2020

SC-1, 03 DEC 2020 to 31 DEC 2020