

APP CRS
079°

Rwy Idg
TDZE
355

5001
Apt Elev
355

RNAV (GPS) RWY 8

J LYNN HELMS SEVIER COUNTY (DEQ)

RNP APCH.

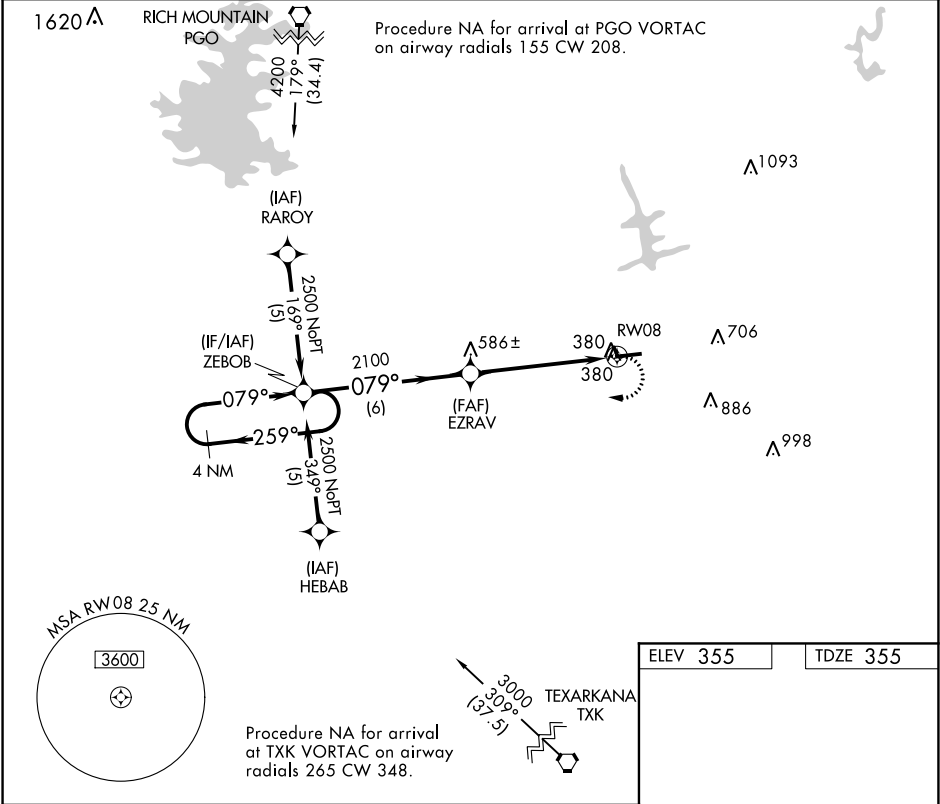
▼

▲

If local altimeter setting not received, use Texarkana altimeter setting and increase all MDAs 100 feet.
Rwy 8 helicopter visibility reduction below ¾ SM NA.

MISSED APPROACH: Climbing right turn to 2500 direct ZEBOB and hold.

ASOS 134.075	FORT WORTH CENTER 123.925 269.475	UNICOM 122.8 (CTAF) 0
------------------------	---	---------------------------------



4 NM Holding Pattern

ZEBOB

2500

259° 079°

EZRAV

2100

3.05° TCH 45

RW08

6 NM 5.3 NM

2500 ZEBOB

5001 X 75

079° to RW08

VGSI and descent angles not coincident (VGSI Angle 3.00/TCH 62).

REIL Rwy 8 and 26 0

MIRL Rwy 8-26 0

CATEGORY	A	B	C	D
LNAV MDA	780-1	425 (500-1)	NA	
CIRCLING	900-1	545 (600-1)	NA	