

VOR/DME OSW
117.6
Chan **123**

APP CRS
127°

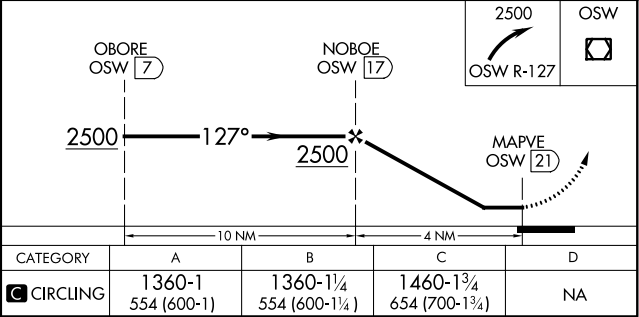
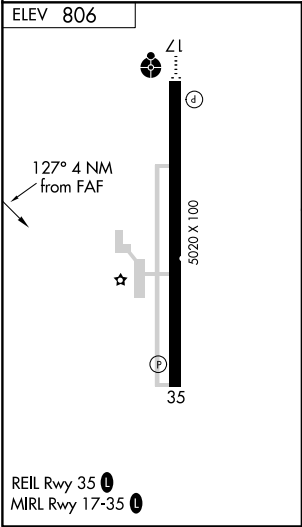
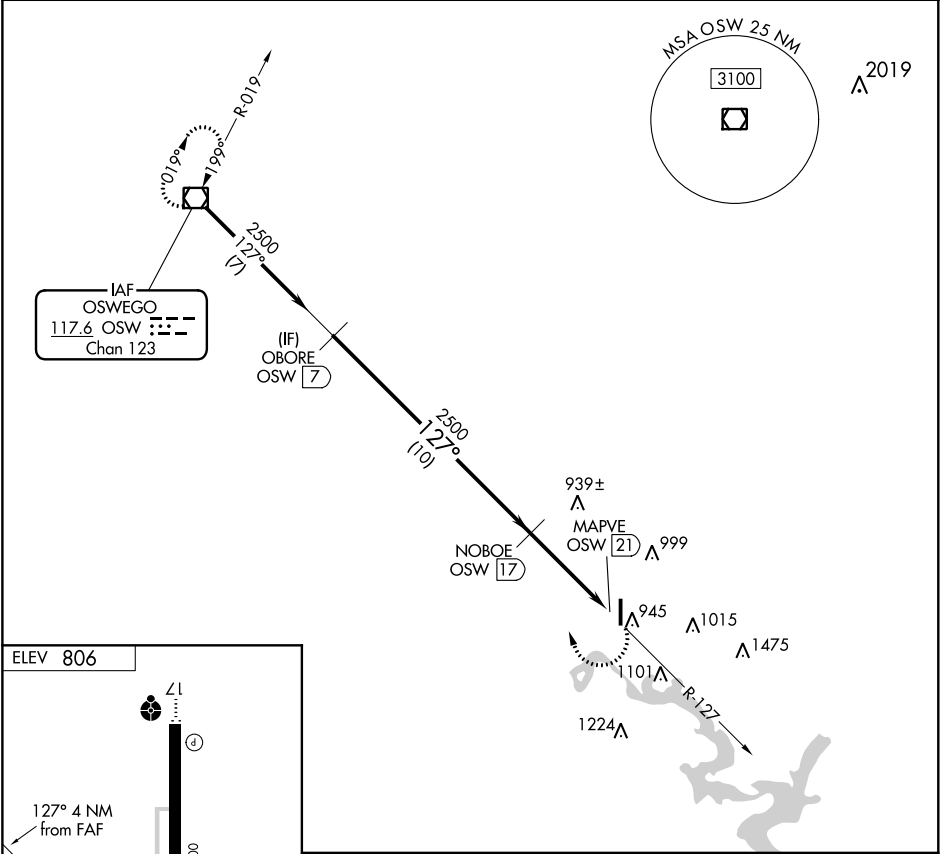
Rwy Idg
TDZE
Apt Elev
N/A
N/A
806

VOR/DME-A
MIAMI RGNL (MIO)

When local altimeter setting not received, use Grove altimeter setting.

MISSED APPROACH: Climbing right turn to 2500 on OSW VOR/DME R-127 to OSW VOR/DME and hold.

| | | |
|----------------------------|--|---------------------------------|
| AWOS-3PT 119.675 | KANSAS CITY CENTER 128.6 282.325 | UNICOM 122.8 (CTAF) 0 |
|----------------------------|--|---------------------------------|



SC-1, 03 DEC 2020 to 31 DEC 2020

SC-1, 03 DEC 2020 to 31 DEC 2020