

LOC I-DSY <b>110.1</b> Chan <b>38</b>	APP CRS <b>011°</b>	Rwy Idg <b>6008</b> TDZE <b>253</b> Apt Elev <b>264</b>
---	------------------------	---

ILS or LOC RWY 1  
SEARCY MUNI (SRC)

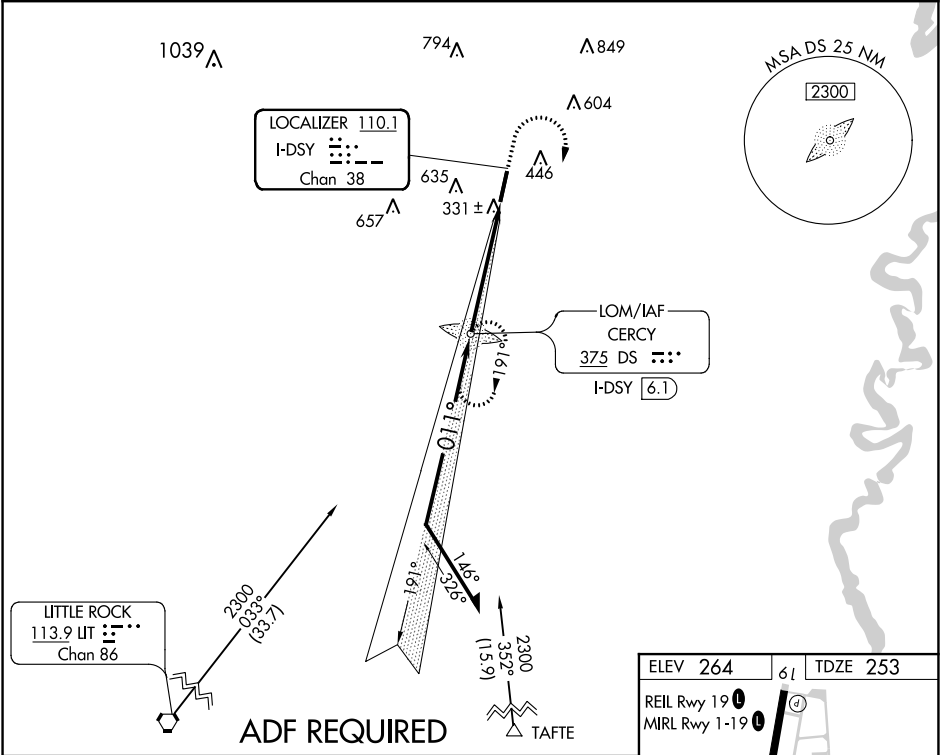
**NA**

Circling NA for Cat C west of runway 1-19. If local altimeter setting not received, use Little Rock Bill and Hillary Clinton National/Adams Field altimeter setting and increase all DA/MDAs 100 feet. VDP NA with Little Rock Bill and Hillary Clinton National/Adams Field altimeter setting. ADF Required.

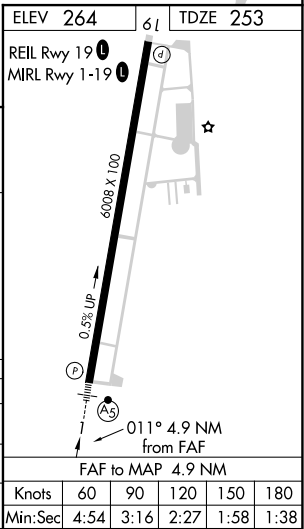
**MALSR**

**MISSED APPROACH:** Climb to 800 then climbing right turn to 2300 direct CERCY LOM and hold.

AWOS-3PT <b>128.325</b>	LITTLE ROCK APP CON <b>119.75 291.775</b>	CLNC DEL <b>119.75</b>	UNICOM <b>122.7 (CTAF) 0</b>
----------------------------	--	---------------------------	---------------------------------



<div>Remain within 10 NM</div> <div>2300</div> <div>GS 3.00° TCH 54</div> <div>VGSI and ILS glidepath not coincident (VGSI Angle 3.00/TCH 57).</div>	<div>LOM</div> <div>I-DSY [6.1]</div> <div>1877</div>		<div>800</div> <div>↑</div>	<div>2300</div> <div>↷</div>	<div>DS</div> <div></div>	
	<div>191°</div> <div>011°</div> <div>1900</div> <div>011°</div>		<div>I-DSY [2.1]</div>	<div>I-DSY [1.2]</div>	<div>↷</div>	
	<div>3.9 NM</div> <div>1 NM</div>					
	CATEGORY	A	B	C	D	
	S-ILS 1	453-½ 200 (200-½)			NA	
S-LOC 1	600-½ 347 (400-½)			NA		
CIRCLING	760-1 496 (500-1)		760-1½ 496 (500-1½)	NA		



SC-1, 03 DEC 2020 to 31 DEC 2020

SC-1, 03 DEC 2020 to 31 DEC 2020