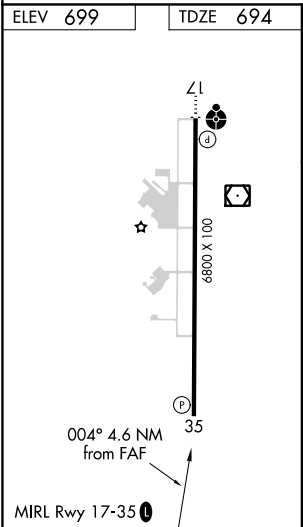
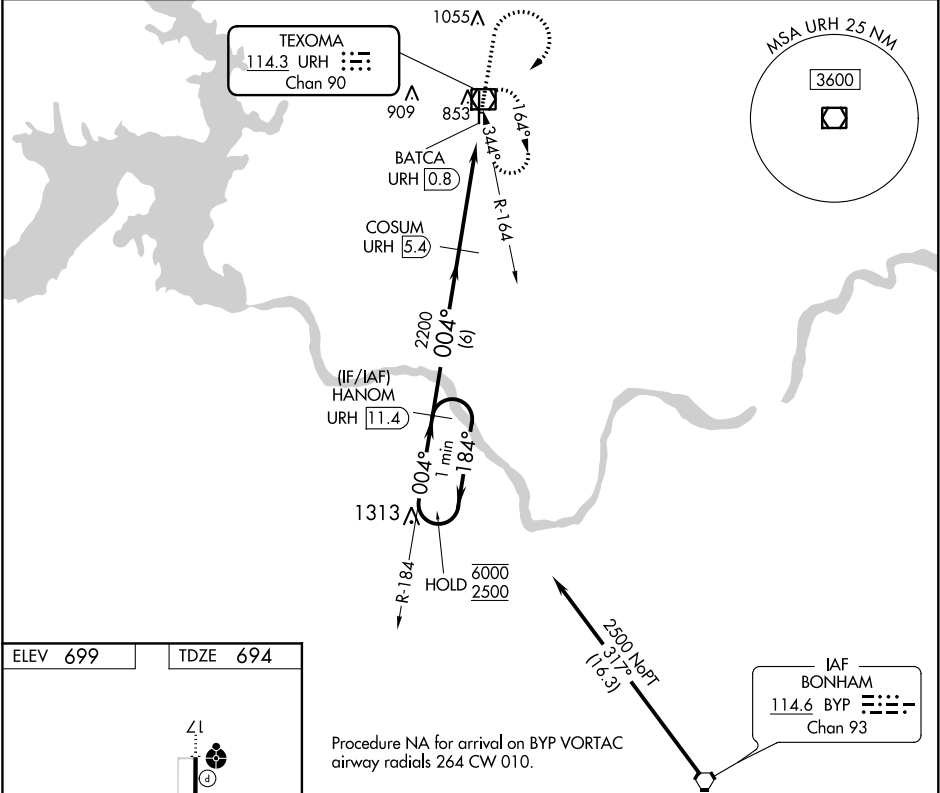


VOR/DME URH	APP CRS	Rwy Idg	6800
114.3	004°	TDZE	694
Chan 90		Apt Elev	699

VOR RWY 35
DURANT RGNL - EAKER FIELD (DUA)

DME required.	MISSED APPROACH: Climb to 1700 then climbing right turn to 2500 direct URH VOR/DME, continue climb-in-hold to 2500.
---------------	---

AWOS-3 124.175	FORT WORTH CENTER 124.75 323.0	UNICOM 122.8 (CTAF) 0
-------------------	-----------------------------------	--------------------------



One Minute Holding Pattern				HANOM URH 11.4		COSUM URH 5.4		URH 2.1		BATCA URH 0.8		1700 ↑		2500 ↗		URH ◻			
<u>6000</u> ← 184°				004° →				004°				3.00° TCH 42				2200			
				6 NM				3.3 NM				1.3 NM							
CATEGORY		A		B		C		D											
S-35		1140-1		446 (500-1)		1140-1 ³ / ₈ 446 (500-1 ³ / ₈)		NA											
CIRCLING		1260-1		561 (600-1)		1360-1 ³ / ₄ 661 (700-1 ³ / ₄)		NA											

SC-1, 03 DEC 2020 to 31 DEC 2020

SC-1, 03 DEC 2020 to 31 DEC 2020