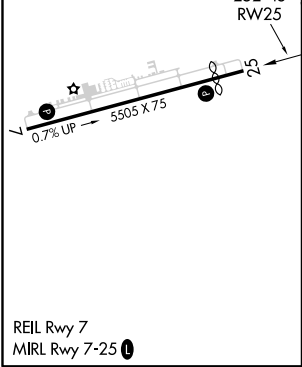
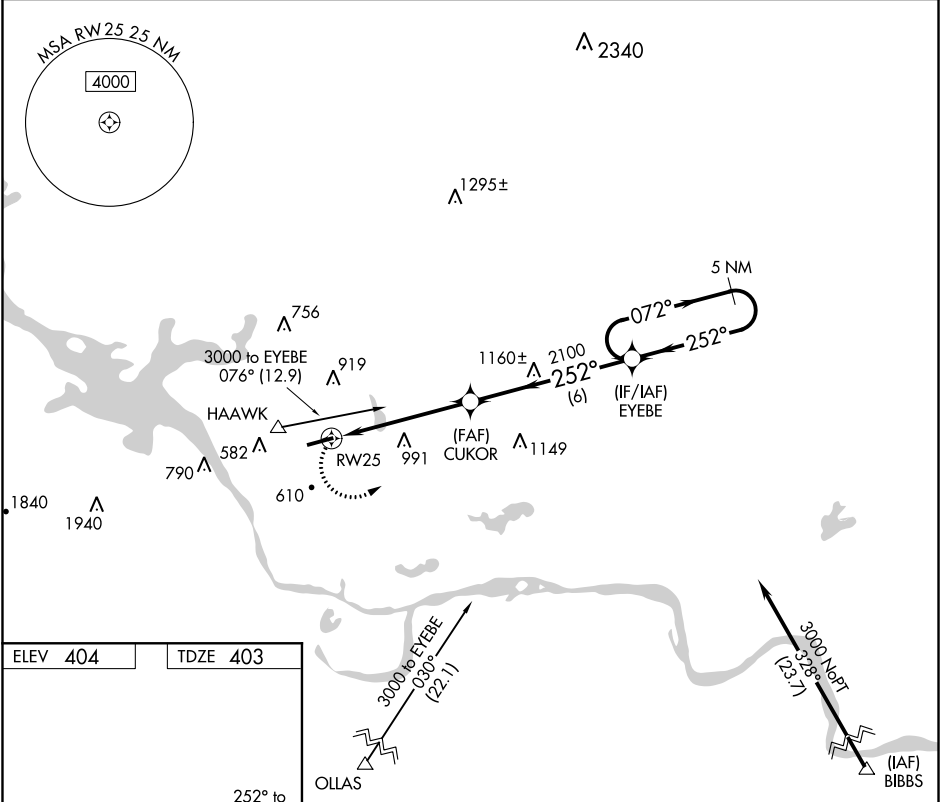

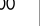
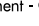
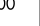


APP CRS	Rwy Idg	4799
252°	TDZE	403
	Apt Elev	404

RNAV (GPS) RWY 25
RUSSELLVILLE RGNL (RUE)

DME/DME RNP-0.3 NA. Helicopter visibility reduction below 1 SM NA. Night landing: Rwy 25 NA.		MISSED APPROACH: Climbing left turn to 3000 direct EYEBE WP and hold.	
ASOS	RAZORBACK APP CON	MEMPHIS CENTER	UNICOM
132.475	120.9 343.75	128.475 377.15	122.7 (CTAF) 0



<div><div>3000</div><div></div></div>		Visual Segment - Obstacles.		<div><div>EYEBE</div><div>5 NM Holding Pattern</div></div>	
<div><div></div><div></div></div>		<div><div>CUKOR</div><div>2100</div></div>		<div><div>072°</div><div>252°</div><div>3000</div></div>	
<div><div></div><div>5.2 NM</div></div>		<div><div>6 NM</div></div>			
CATEGORY	A	B	C	D	
LNAV MDA	1260-1 857 (900-1)	1260-1¼ 857 (900-1¼)	1260-2½ 857 (900-2½)	1260-2¾ 857 (900-2¾)	
CIRCLING	1260-1 857 (900-1)	1260-1¼ 857 (900-1¼)	1260-2½ 857 (900-2½)	1260-2¾ 857 (900-2¾)	