

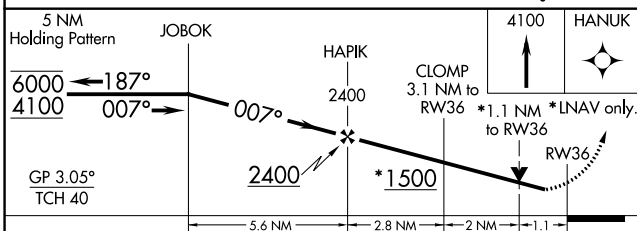
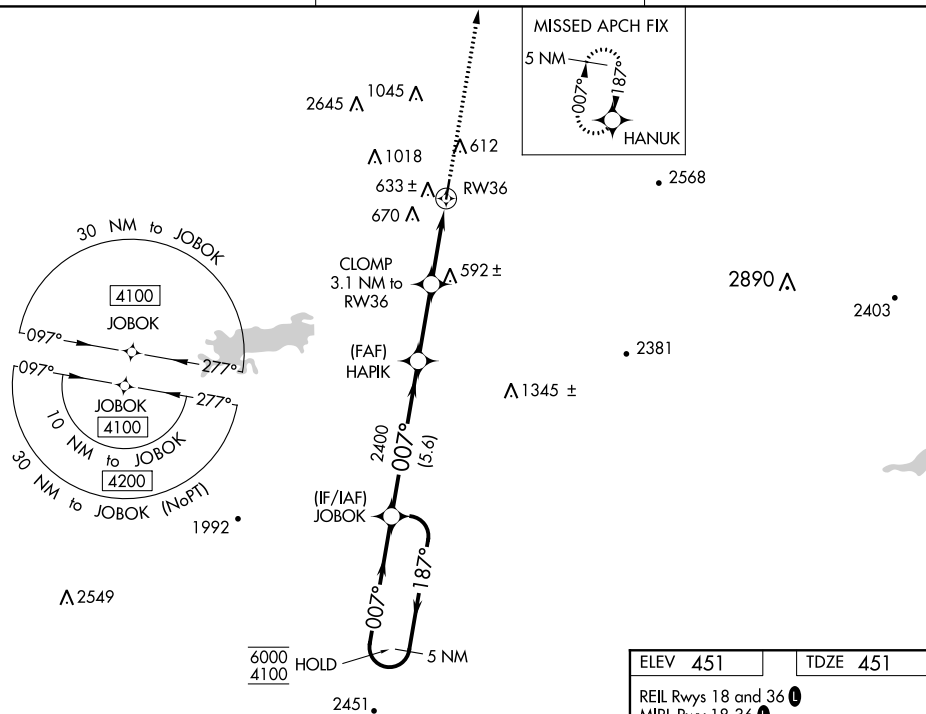
19339


RNAV (GPS) RWY 36
ROBERT S KERR (RKR)

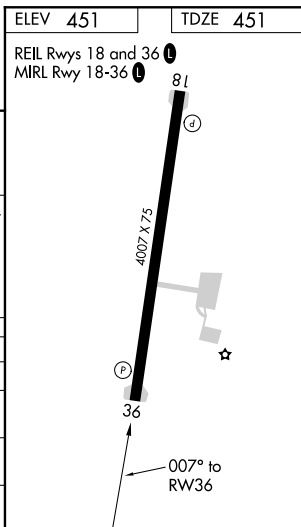
T Rwy 36 helicopter visibility reduction below $\frac{3}{4}$ SM NA. For uncompensated Baro-VNAV systems, LNAV/VNAV NA below -15°C or above 54°C.
A Circling NA for Cats C and D West of Rwy 18-36.

MISSED APPROACH: Climb to 4100 direct HANUK and hold, continue to climb-in-hold to 4100.

RAZORBACK APP CON ★
120.9 343.75

UNICOM
22.8 (CTAF) **L**

| CATEGORY | | A | B | C | D |
|--|-----|-----------------------|-----------------------|--|--|
| LPV | DA | 701-1 250 (300-1) | | | |
| LNAV/ VNAV | DA | 786-1 335 (400-1) | | | |
| LNAV | MDA | 840-1 389 (400-1) | | 840-1 $\frac{1}{8}$ 389 (400-1 $\frac{1}{8}$) | |
|  CIRCLING | | 1000-1 549 (600-1) | 1100-1 649 (700-1) | 1100-1 $\frac{3}{4}$ 649 (700-1 $\frac{3}{4}$) | 1160-2 $\frac{1}{4}$ 709 (800-1 $\frac{1}{4}$) |



ROBERT S KERR (RKR)
RNAV (GPS) RWY 36

SC-1, 03 DEC 2020 to 31 DEC 2020