

▼

▲ NA

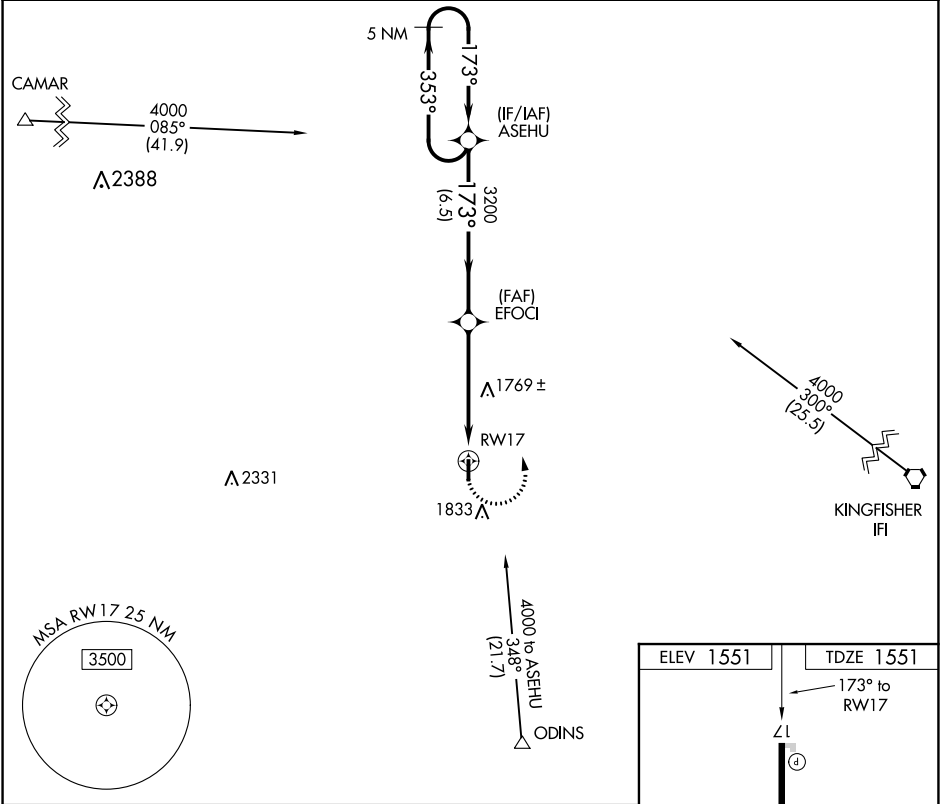
When local altimeter setting not received, use Clinton Rgnl altimeter setting and increase all MDA 100 feet; increase all Cat C visibilities ¼ mile. DME/DME RNP-0.3 NA.

MISSED APPROACH: Climbing left turn to 4000 direct ASEHU and hold.

AWOS-3  
134.175

VANCE APP CON ★  
126.75 346.325

UNICOM  
122.8 (CTAF) 0



5 NM Holding Pattern ASEHU

4000 ← 353°  
173° →

ASEHU

EFOCI

3200

3.04°  
TCH 40

RWY 17

6.5 NM

5 NM

CATEGORY	A	B	C	D
LNVA MDA	2060-1	509 (600-1)	2060-1½ 509 (600-1½)	NA
CIRCLING	2060-1 509 (600-1)	2240-1 689 (700-1)	2240-2 689 (700-2)	NA

ELEV 1551

TDZE 1551

173° to RWY 17

4001 X 60

0.5% UP

35

★

MIRL Rwy 17-35 0