

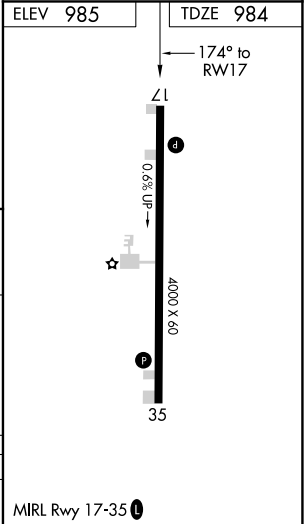
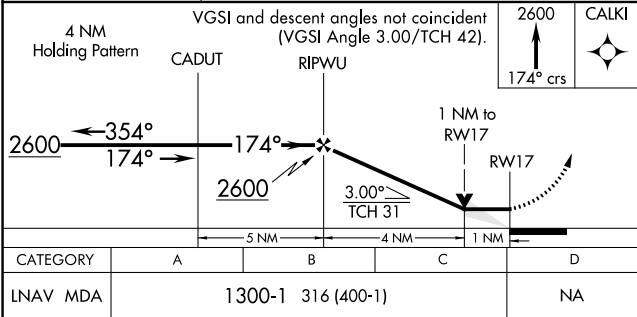
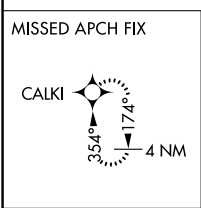
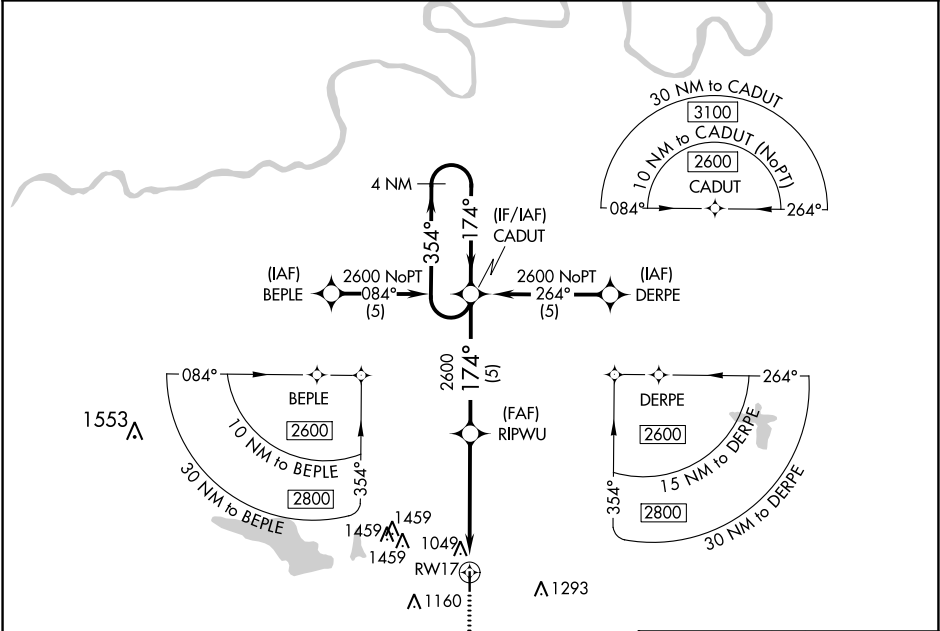
APP CRS	Rwy Idg	4000
174°	TDZE	984
	Apt Elev	985

RNAV (GPS) RWY 17

CHANDLER RGNL (CQB)

RNP APCH.	MISSED APPROACH: Climb to 2600 via 174° course to CALKI WP and hold.
<div><div>▼</div><div>▲</div></div> When local altimeter setting not received, use Shawnee altimeter setting and increase all MDA 80 feet; increase LNAV Cat C visibility 1⁄8 SM.	

AWOS-3 119.275	KANSAS CITY CENTER 127.8 319.1	CTAF 122.9 0
-------------------	-----------------------------------	-----------------



SC-1, 03 DEC 2020 to 31 DEC 2020

SC-1, 03 DEC 2020 to 31 DEC 2020