

WAAS
CH 82032
W17A

APP CRS
174°

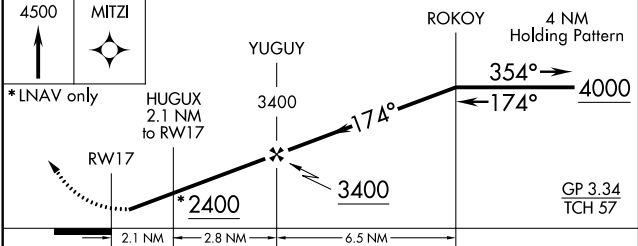
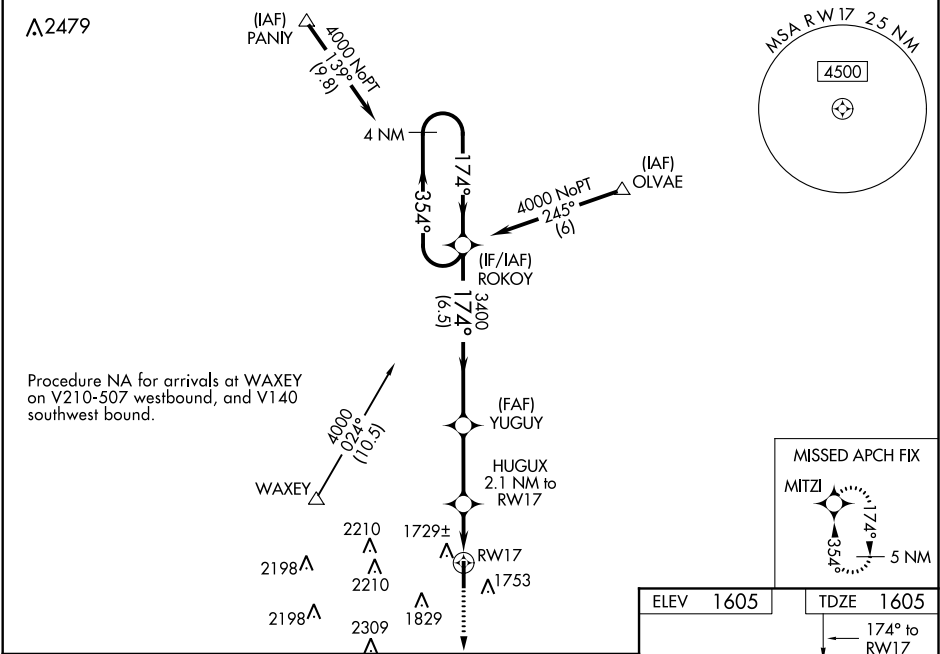
Rwy Idg 5100
TDZE 1605
Apt Elev 1605

RNAV (GPS) RWY 17
THOMAS P STAFFORD (OJA)

Baro-VNAV NA when using Clinton Rgnl altimeter setting. For uncompensated Baro-VNAV systems, LNAV/VNAV NA below -18°C (0°F) or above 54°C (130°F). DME/DME RNP-0.3 NA. Helicopter visibility reduction below 1 SM NA. Night Landing: Rwy 17, 35 operational VGSI required, remain on or above VGSI glidepath until threshold. When local altimeter setting not received, use Clinton Rgnl altimeter setting and increase all DA 32 feet and all MDA 40 feet. Increase LNAV Cat C visibility to 1½ mile, and Circling Cat C visibility to 2½ mile.

MISSED APPROACH:
Climb to 4500 direct MITZI and hold.

AWOS-3 118.575	FORT WORTH CENTER 128.4 269.37	UNICOM 122.8 (CTAF)
-------------------	-----------------------------------	------------------------



CATEGORY	A	B	C	D
LPV DA	1875-1	270 (300-1)		NA
LNAV/VNAV DA	1904-1	299 (300-1)		NA
LNAV MDA	1980-1	375 (400-1)		NA
CIRCLING	2080-1 475 (500-1)	2140-1 535 (600-1)	2380-2¼ 775 (800-2¼)	NA

