

RNP APCH.

▼

▲

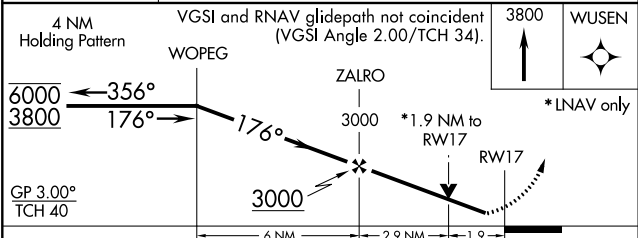
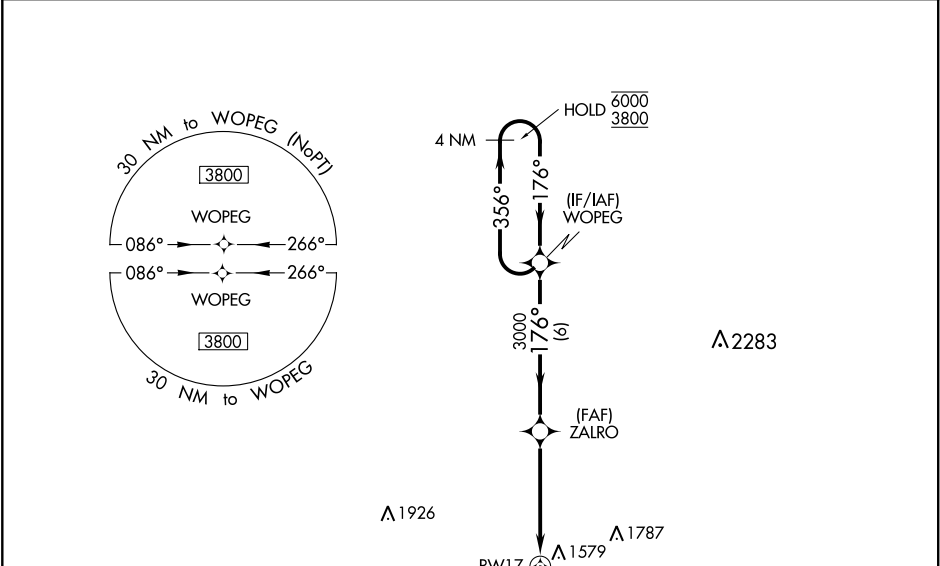
Circling NA to Rwy 18 and 36. Circling Rwy 35 NA at night.
Rwy 17 helicopter visibility reduction below ¾ SM NA. For uncompensated Baro-VNAV systems, LNAV/VNAV NA below -17°C or above 54°C.

MISSED APPROACH: Climb to 3800 direct WUSEN and hold.

AWOS-3
118.475

OKE CITY APP CON
124.6 266.8

UNICOM
122.8 (CTAF) **0**



CATEGORY	A	B	C	D
LPV DA	1670-¾ 250 (300-¾)			
LNAV/VNAV DA	1754-1 334 (400-1)			
LNAV MDA	1860-1 440 (500-1)	1860-1¼ 440 (500-1¼)		
CIRCLING	1900-1 480 (500-1)	2140-2 720 (800-2)	2140-2¼ 720 (800-2¼)	

