

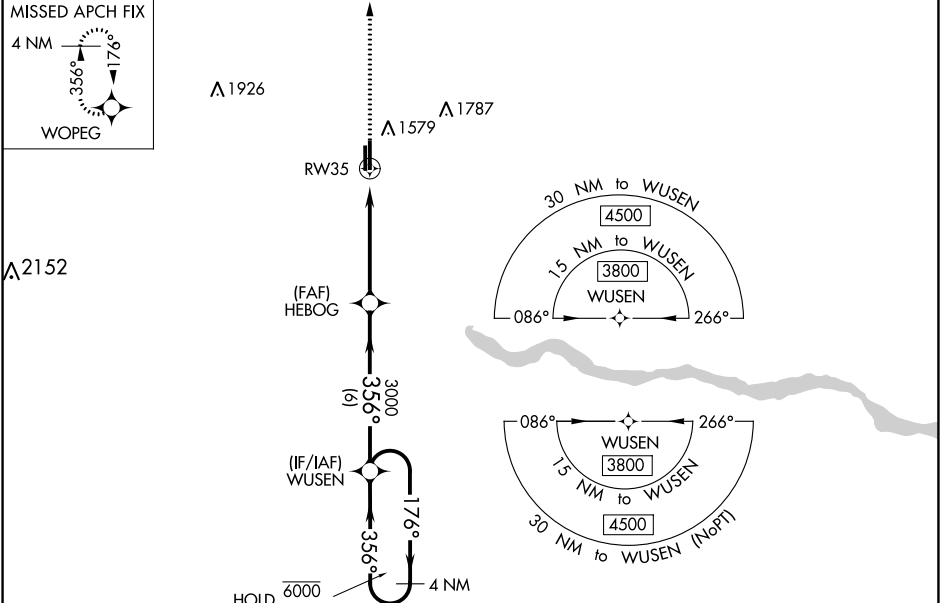
WAAS CH 97443 W35A	APP CRS 356°	Rwy Idg TDZE Apt Elev	5600 1417 1420
--	------------------------	-----------------------------	---

RNAV (GPS) RWY 35

EL RENO RGNL (RQ0)

RNP APCH.	MISSED APPROACH: Climb to 3800 direct WOPEG and hold.
▼ Rwy 35 helicopter visibility reduction below 1 SM NA. Straight-in Rwy 35 NA at night, Circling Rwy 35 NA at night. For uncompensated Baro-VNAV systems, LNAV/VNAV NA below -17°C or above 54°C. Circling NA to Rwy 18 and 36.	

AWOS-3 118.475	OKE CITY APP CON 124.6 266.8	UNICOM 122.8 (CTAF) 0
--------------------------	--	---------------------------------



3800	WOPEG	VGSIs and descent angles not coincident (VGSIs Angle 2.00/TCH 34).	4 NM Holding Pattern	ELEV 1420	TDZE 1417
CATEGORY	A	B	C	D	
LPV DA	1667-1		250 (300-1)		
LNAV/ VNAV DA	1667-1		250 (300-1)		
LNAV MDA	1800-1	383 (400-1)	1800-1½	383 (400-1½)	
CIRCLING	1900-1	480 (500-1)	2140-2 720 (800-2)	2140-2¼ 720 (800-2¼)	
MIRL Rwy 17-35 0 REIL Rwy 17 and 35 0					