

WAAS
CH **72899**
W16A

APP CRS
159°

Rwy Idg
TDZE **1287**
Apt Elev **1288**

RNAV (GPS) RWY 16

NORTHWEST ARKANSAS NATIONAL (XNA)

⚠

For uncompensated Baro-VNAV systems, LNAV/VNAV NA below -15°C (5°F) or above 54°C (130°F). DME/DME RNP-0.3 NA. For inop ALS increase LPV Cat E visibility to RVR 4000, LNAV/VNAV all Cats and LNAV Cat C/D/E visibility to 1 3⁄8 mile. ** RVR 1800 authorized with use of FD or AP or HUD to DA.

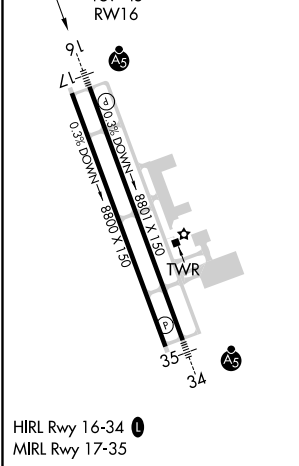
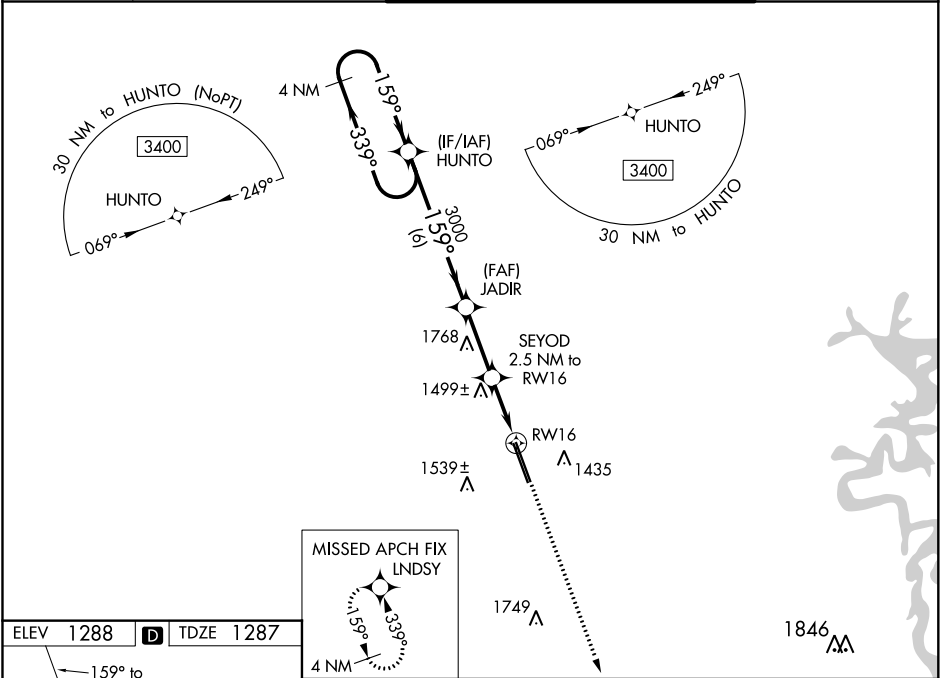
MALSR

AS

MISSED APPROACH:

Climb to 3400 direct LND SY and hold.

ATIS 119.425	RAZORBACK APP CON ★ 121.0 244.575	NORTHWEST ARKANSAS NATIONAL TOWER★ 127.1 (CTAF) 0	GND CON 121.9
------------------------	---	--	-------------------------



4 NM Holding Pattern		VGSi and RNAV glidepath not coincident (VGSi Angle 3.00/TCH 52).		3400	LND SY
GP 3.00° TCH 57		HUNTO		JADIR	SEYOD 2.5 NM to RW16
3400		339°		3000	*1.3 NM to RW16
159°		159°		*2140	RW16
6 NM		2.7 NM		1.2	1.3
CATEGORY	A	B	C	D	E
LPV DA **	1487/24 200 (200-1⁄2)				
LNAV/VNAV DA	1722/50 435 (500-1)				
LNAV MDA	1760/24	473 (500-1⁄2)	1760/50 473 (500-1)		
C CIRCLING	1760-1	472 (500-1)	2040-2 1⁄4 752 (800-2 1⁄4)	2080-2 1⁄2 792 (800-2 1⁄2)	2080-2 3⁄4 792 (800-2 3⁄4)