

WAAS CH <b>65822</b> <b>W17A</b>	APP CRS <b>177°</b>	Rwy Idg <b>4200</b> TDZE <b>599</b> Apt Elev <b>600</b>
--	------------------------	---

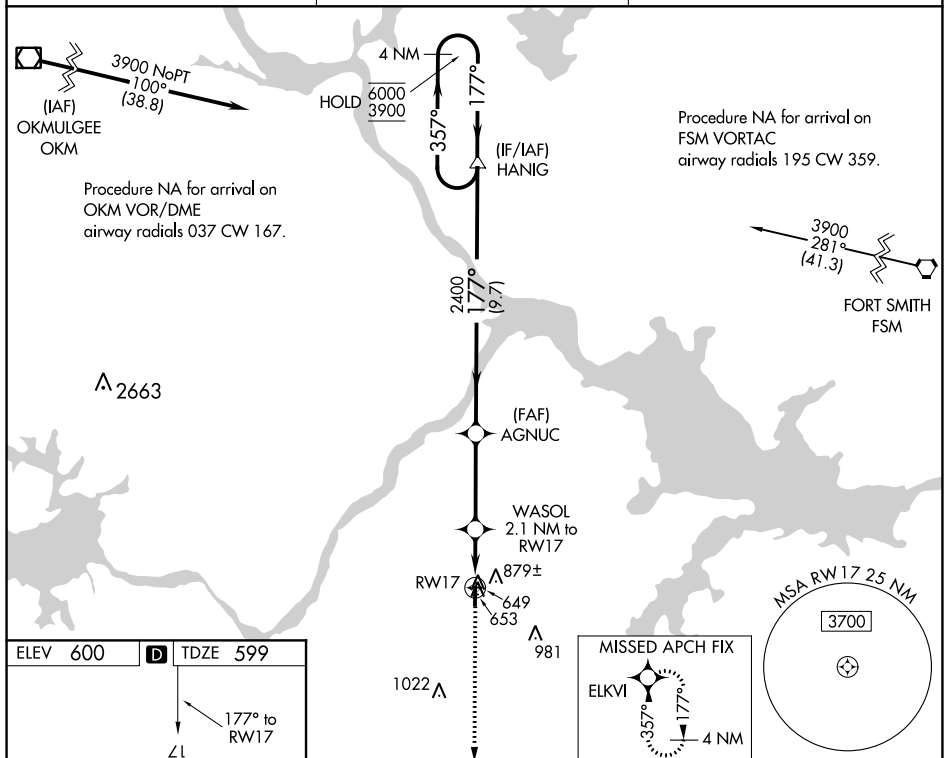
RNAV (GPS) RWY 17  
STIGLER RGNL (GZL)

RNP APCH.

**T** Rwy 17 helicopter visibility reduction below 1 SM NA.  
Procedure NA at night.

**MISSED APPROACH:** Climb to 3900 direct ELKVI and hold, continue climb-in-hold to 3900.

AWOS-3 <b>118.575</b>	FORT WORTH CENTER <b>132.2 338.35</b>	CTAF <b>122.9</b>
--------------------------	--	----------------------

[illegible]