

STIGLER, OKLAHOMA

AL-9467 (FAA)

20198

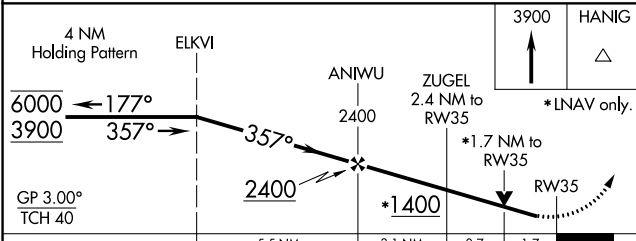
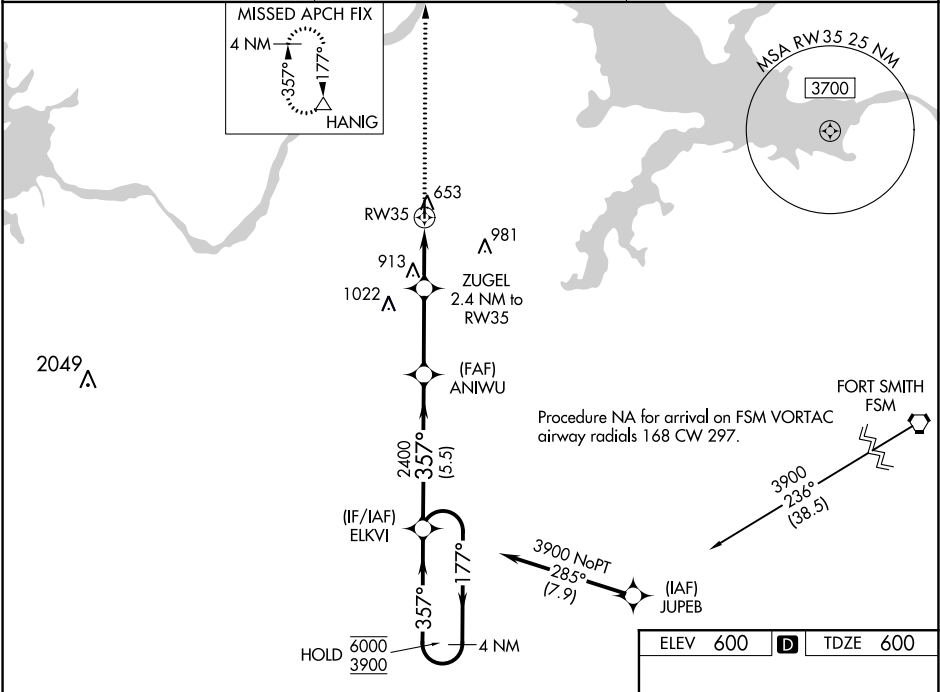
WAAS CH 82522 W35A	APP CRS 357°	Rwy Idg TDZE Apt Elev	4296 600 600
--	------------------------	-----------------------------	---

RNAV (GPS) RWY 35

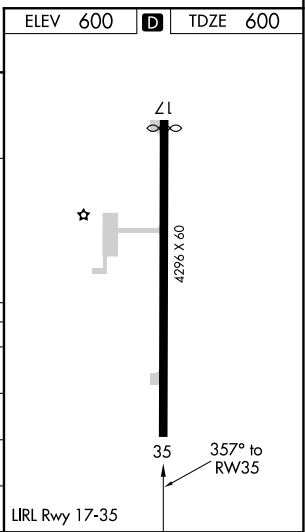
STIGLER RGNL (GZL)

RNP APCH.	MISSED APPROACH: Climb to 3900 direct HANIG and hold.
-----------	---

AWOS-3 118.575	FORT WORTH CENTER 132.2 338.35	CTAF 122.9
--------------------------	--	----------------------



CATEGORY	A	B	C	D
LPV DA	850-1	250 (300-1)	NA	NA
LNAV/ VNAV	867-1	267 (300-1)	NA	NA
LNAV MDA	1180-1	580 (600-1)	NA	NA
C CIRCLING	1180-1	580 (600-1)	NA	NA



STIGLER, OKLAHOMA
Amdt 1D 05DEC19

35°17'N-95°06'W

RNAV (GPS) RWY 35

SC-1, 03 DEC 2020 to 31 DEC 2020

SC-1, 03 DEC 2020 to 31 DEC 2020