

LOC/DME I-ABI 110.3 Chan 40	APP CRS 355°	Rwy Idg 7198 TDZE 1776 Apt Elev 1791
---	------------------------	---

ILS or LOC RWY 35R
ABILENE RGNL (ABI)

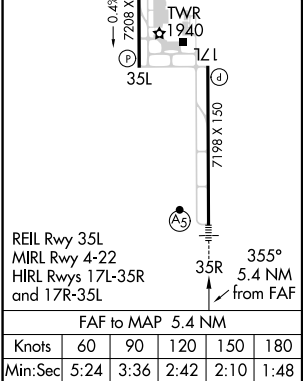
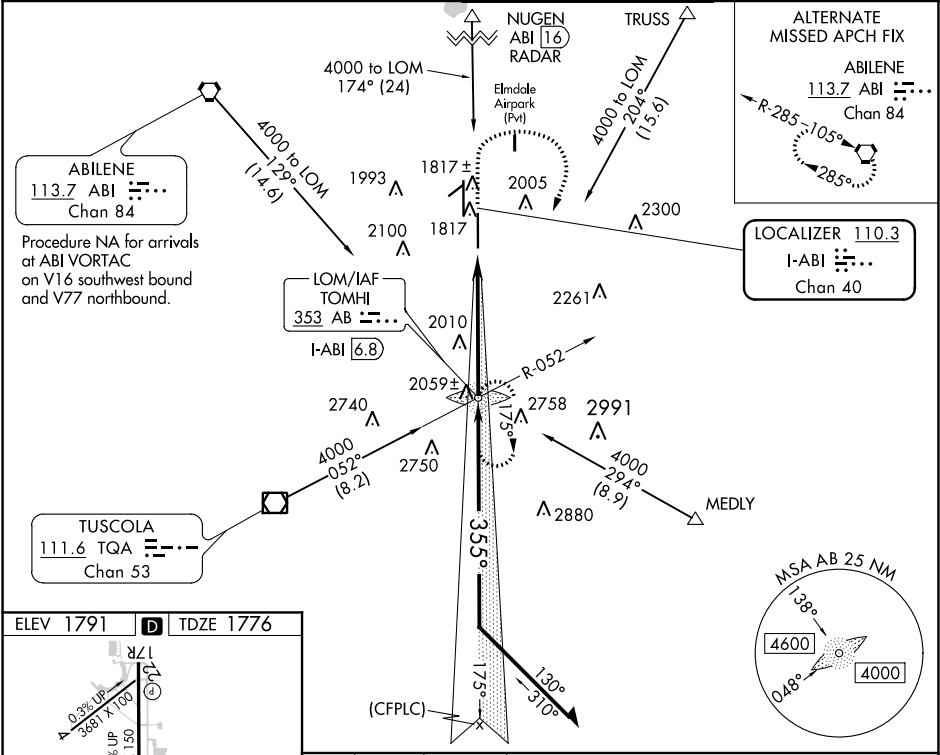
ADF required. RADAR required for procedure entry at NUGEN.




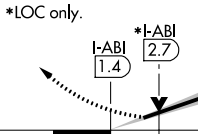
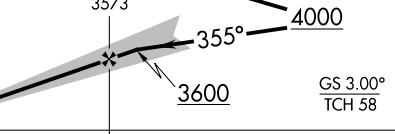

For inop ALS, increase S-ILS 35R Cat E visibility to RVR 4000, and S-LOC 35R Cat C/D/E visibility to 1 $\frac{1}{2}$ SM.
** RVR 1800 authorized with use of FD or AP or HUD to DA.



MISSED APPROACH: Climb to 3300 then climbing right turn to 4000 direct TOMHI LOM/INT/I-ABI 6.8 DME and hold.

ATIS 118.25	ABILENE APP CON 125.0 338.3 (EAST) 127.2 282.3 (WEST)	ABILENE TOWER 120.1 257.8	GND CON 121.7 348.6
-----------------------	---	-------------------------------------	-------------------------------



3300	4000	TOMHI	TOMHI LOM/INT I-ABI 6.8			Remain within 15 NM	
							
*LOC only.							
							
CATEGORY			A	B	C	D	E
S-ILS 35R**			1976/24 200 (200-½)				
S-LOC 35R			2260/24	484 (500-½)	2260/50	484 (500-1)	
 CIRCLING			2300-1 509 (600-1)	2320-1 529 (600-1)	2420-1¾ 629 (700-1¾)	2460-2 669 (700-2)	2620-3 829 (900-3)

SC-2, 03 DEC 2020 to 31 DEC 2020

SC-2, 03 DEC 2020 to 31 DEC 2020