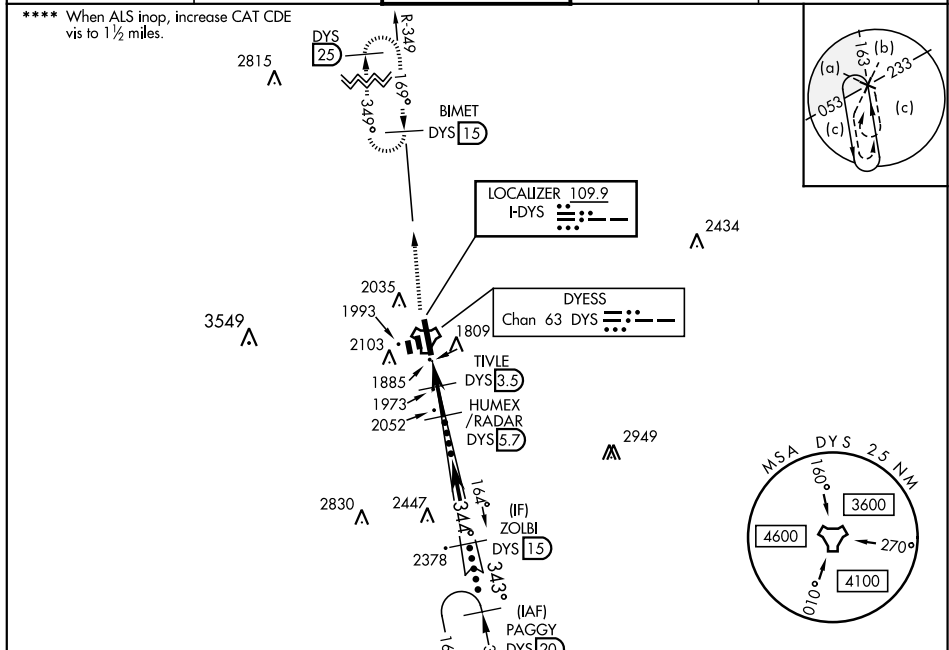


# HI-ILS or LOC X RWY 34

LOC I-DYS <b>109.9</b>	APCH CRS <b>344°</b>	Rwy Idg <b>13,500</b> TDZE <b>1788</b> Arprt Elev <b>1790</b>	JAL-2 [USAF]	DYESS AFB (KDYS)
---------------------------	-------------------------	---	--------------	------------------

<p>* When ALS inop, increase CAT CDE RVR to 40 and vis to ¾ mile.</p> <p>** When ALS inop, increase CAT CDE vis to 1½ miles.</p> <p>*** Circling to other than Rwy 16 NA.</p>	<p>ALSF-1</p>	<p>MISSED APPROACH: Climb to 4000 via DYS TACAN R-349 to BIMET and hold.</p>
---	---------------	--

<p>ATIS ★</p> <p><b>269.175</b></p>	<p>ABILENE APP CON</p> <p><b>125.0 338.3 EAST</b> <b>127.2 282.3 WEST</b></p>	<p>DYESS TOWER</p> <p><b>133.0 257.675</b></p>	<p>GND CON</p> <p><b>118.35 275.8</b></p>	<p>ASR</p>
-------------------------------------	---	--	---	------------



## RADAR or DME REQUIRED

EMERG SAFE ALT 100 NM 4600

4000

↑

DYS

R-349

BIMET

DYS

15

† LOC only

HUMEX /RADAR

5.7

ZOLBI

15

PAGGY

20

10,000

TACAN

HEPEM

1.5

TIVLE

3.5

2500 †

3100

344°

343°

6000

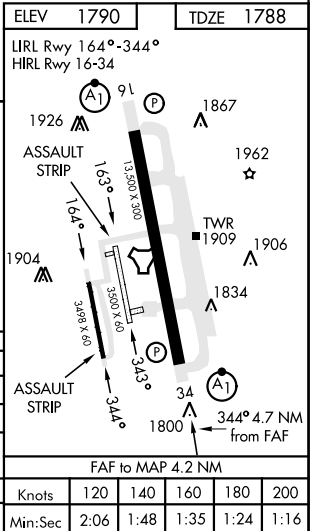
GS 2.50°

TCH 51

5 NM

4.2 NM

CATEGORY	C	D	E
S-ILS 34 *	1988/24	200 (200-½)	
S-LOC 34 **	2240/45	452 (500-¾)	
*** CIRCLING	2460-1¾ 670 (700-1¾)	2460-2 670 (700-2)	2460-2¼ 670 (700-2¼)
WITHOUT LAST STEPDOWN FIX			
S-LOC 34 ****	2320/55	532 (600-1)	



# HI-ILS or LOC X RWY 34