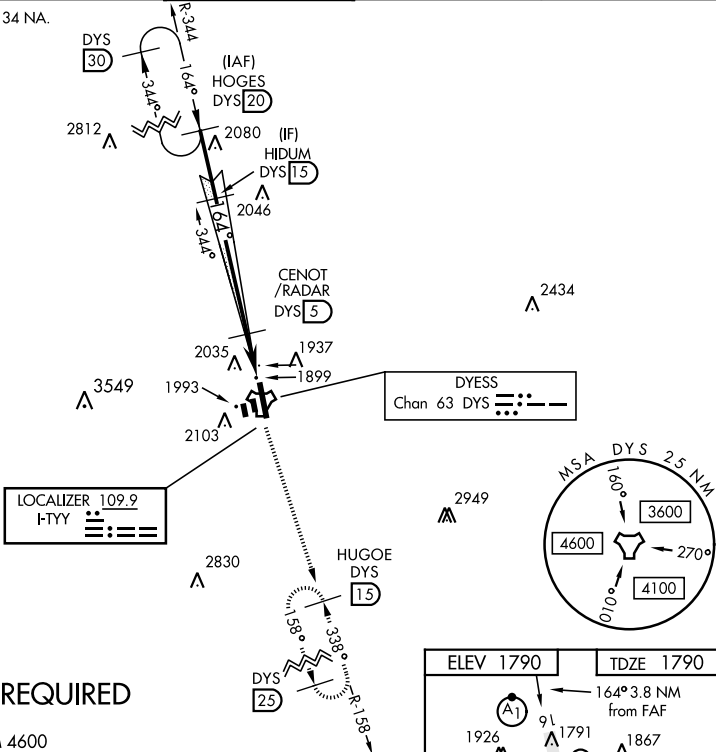


ABILENE, TEXAS

ILS or LOC W RWY 16

LOC I-TYY 109.9	APCH CRS 164°	Rwy ldg 13,500 TDZE 1790 Arprt Elev 1790	AL-2 [USAF]	DYESS AFB (KDYS)
* When ALS inop, increase all CAT RVR to 40 and vis to ¾ mile. ** When ALS inop, increase CAT AB RVR to 55 and vis to 1 mile, CAT CDE vis to 1 ¼ miles.			ALSF-1 	MISSED APPROACH: Climb to 4000 via DYS TACAN R-158 to HUGOE and hold.
ATIS ★ 269.175	ABILENE APP CON 125.0 338.3 EAST 127.2 282.3 WEST	DYESS TOWER 133.0 257.675	GND CON 118.35 275.8	ASR

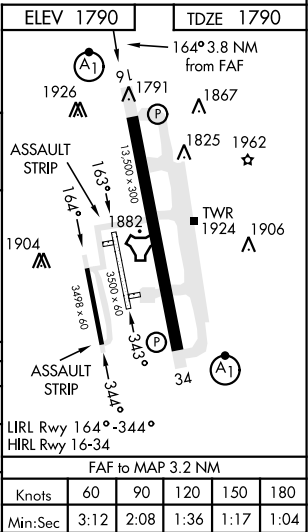
*** Circling to other than Rwy 34 NA.



RADAR or DME REQUIRED

EMERG SAFE ALT 100 NM 4600

HOGES R-344 HIDUM CENOT/RADAR				
5000 164° 4300 2900 164° 2900				
↑ LOC only 4000 DYS R-158 HUGOE DYS 15				
3.2 NM .6 NM GS 2.60° TCH 48				
CATEGORY	A	B	C	D E
S-ILS 16 *	1990/24		200	(200-½)
S-LOC 16 **	2220/24	430 (500-½)	2220/40	430 (500-¾)
CIRCLING ***	2300-1 510 (600-1)	2320-1 530 (600-1)	2460-1¾ 670 (700-1¾)	2460-2 670 (700-2) 2460-2¼ 670 (700-2¼)



ABILENE, TEXAS

Amtd 3 10NOV16

32°25'N-99°51'W

DYESS AFB (KDYS)

ILS or LOC W RWY 16

SC-2, 03 DEC 2020 to 31 DEC 2020

SC-2, 03 DEC 2020 to 31 DEC 2020