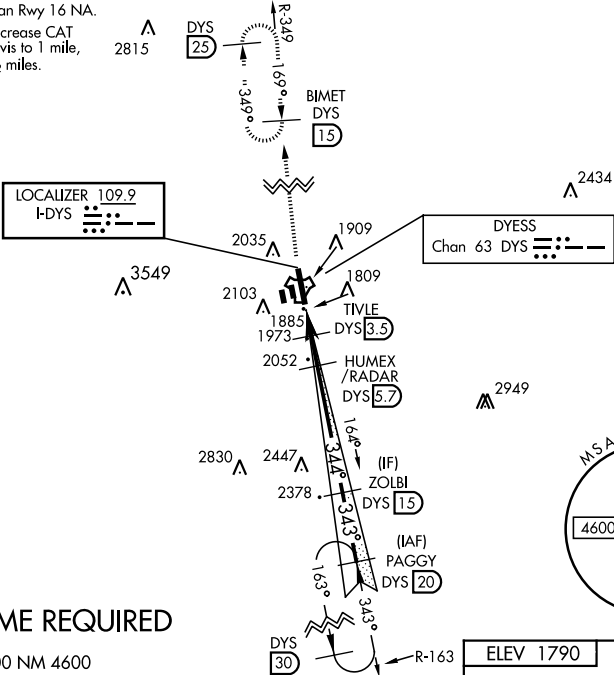


ILS or LOC W RWY 34

LOC I-DYS 109.9	APCH CRS 344°	Rwy Idg 13,500 TDZE 1788 Arpt Elev 1790	AL-2 [USAF]	DYESS AFB (KDYS)
* When ALS inop, increase all CAT RVR to 40 and vis to ¾ mile. ** When ALS inop, increase CAT AB RVR to 55 and vis to 1 mile, CAT CDE vis to 1 ½ miles.			ALSF-1 	MISSED APPROACH: Climb to 4000 via DYS TACAN R-349 to BIMET and hold.
ATIS ★ 269.175	ABILENE APP CON 125.0 338.3 EAST 127.2 282.3 WEST	DYESS TOWER 133.0 257.675	GND CON 118.35 275.8	ASR

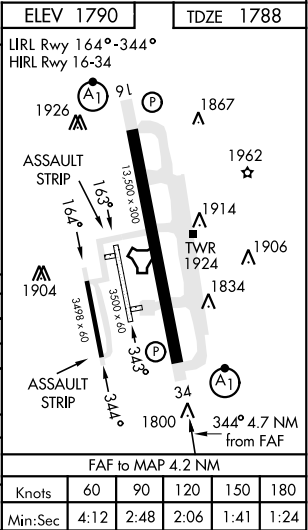
*** Circling to other than Rwy 16 NA.
**** When ALS inop, increase CAT
AB RVR to 55 and vis to 1 mile,
CAT CDE vis to 1 ½ miles.



RADAR or DME REQUIRED

EMERG SAFE ALT 100 NM 4600

4000 DYS R-349	BIMET DYS 15	†LOC only	HUMEX /RADAR 5.7	ZOLBI 15	PAGGY 20	5000
TACAN	HEPERM 1.5	TITILE 2.5	3100	344°	343°	4300
2500	3100	4300	5000	GS 2.50°	TCH 51	
.5 NM	4.2 NM					
CATEGORY	A	B	C	D	E	
S-ILS 34*	1988/24		200	(200-½)		
S-LOC 34**	2240/24	452 (500-½)	2240/45	452 (500-¾)		
CIRCLING***	2300-1 510 (600-1)	2320-1 530 (600-1)	2460-1¾ 670 (700-1¾)	2460-2 670 (700-2)	2460-2¼ 670 (700-2¼)	
WITHOUT LAST STEPDOWN FIX						
S-LOC 34****	2320/24	532 (600-½)	2320/55	532 (600-1)		
CIRCLING***	2320-1	530 (600-1)	2460-1¾ 670 (700-1¾)	2460-2 670 (700-2)	2460-2¼ 670 (700-2¼)	



ILS or LOC W RWY 34

SC-2, 03 DEC 2020 to 31 DEC 2020

SC-2, 03 DEC 2020 to 31 DEC 2020