

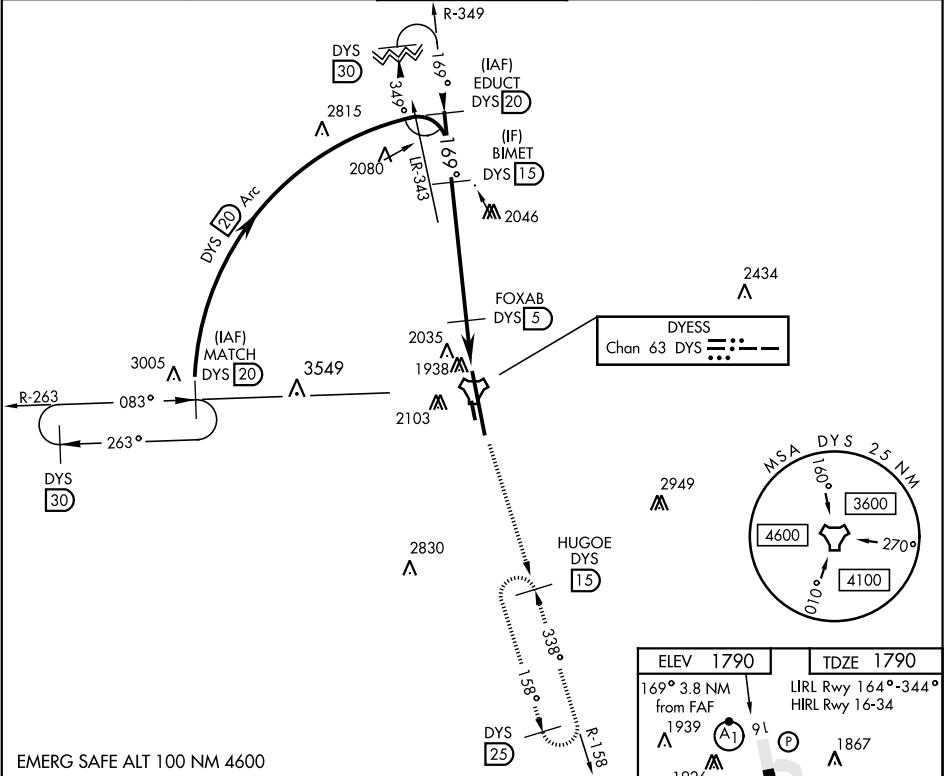
TACAN W RWY 16

TACAN	DYS	APCH CRS	Rwy Idg
Chan 63		169°	13,500
			TDZE 1790
			Arprt Elev 1790

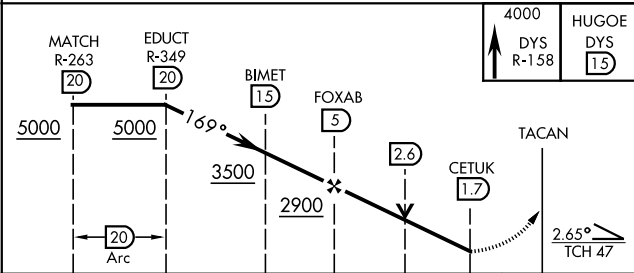
AL-2 [USAF]

DYESS AFB (KDYS)

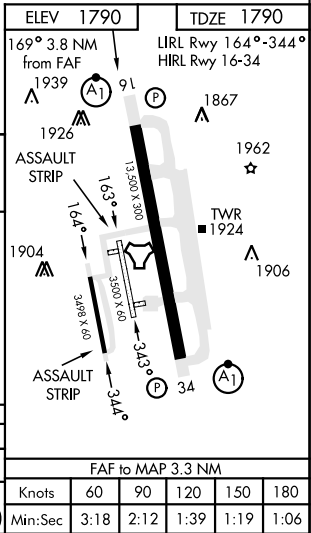
* When ALS inop, increase CAT AB RVR to 55 and vis to 1 mile, CAT CDE vis to 1¼ miles. ** Circling to other than RWY 34 NA		ALSF-1 	MISSED APPROACH: Climb to 4000 via DYS TACAN R-158 to HUGOE and hold.	
ATIS ★ 269.175	ABILENE APP CON 125.0 338.3 EAST 127.2 282.3 WEST	DYESS TOWER 133.0 257.675	GND CON 118.35 275.8	ASR



EMERG SAFE ALT 100 NM 4600



CATEGORY	A	B	C	D	E
S-16 *	2220/24	430 (500-½)	2220/40	430 (500-¾)	
CIRCLING **	2300-1 510 (600-1)	2320-1 530 (600-1)	2460-1¾ 670 (700-1¾)	2460-2 670 (700-2)	2460-2¼ 670 (700-2¼)



TACAN W RWY 16

SC-2, 03 DEC 2020 to 31 DEC 2020

SC-2, 03 DEC 2020 to 31 DEC 2020