

TACAN W RWY 34

TACAN DYS Chan 63	APCH CRS 338°	Rwy Idg 13,500 TDZE 1788 Arpt Elev 1790
-----------------------------	-------------------------	--

AL-2 [USAF]

DYESS AFB (KDYS)

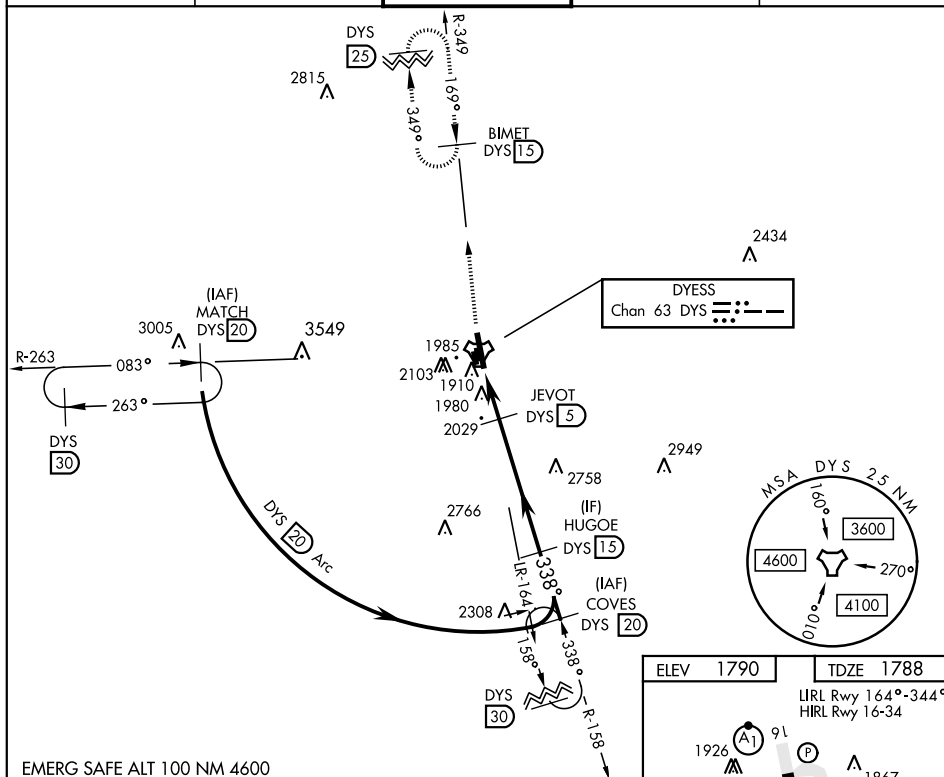
- * When ALS inop, increase CAT AB RVR to 55 and vis to 1 mile, CAT CDE vis to 1 3/8 miles.
** Circling to other than RWY 16 NA

ALSF-1

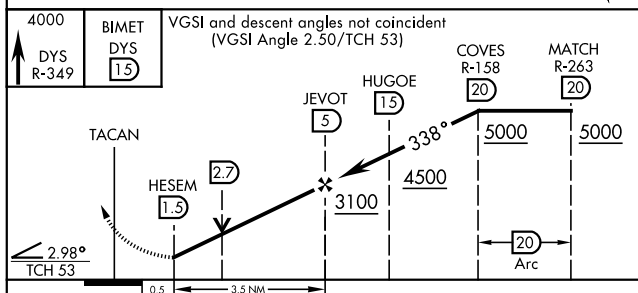


MISSED APPROACH: Climb to 4000 via
DYS TACAN R-349 to BIMET and hold.

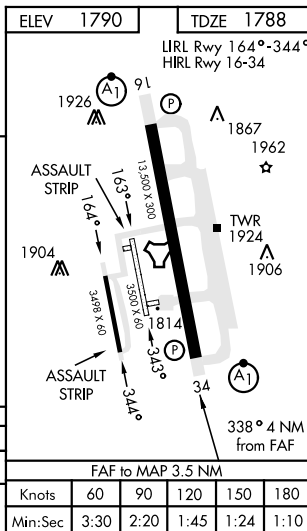
ATIS ★ 269.175	ABILENE APP CON 125.0 338.3 EAST 127.2 282.3 WEST	DYESS TOWER 133.0 257.675	GND CON 118.35 275.8	ASR
-------------------	---	------------------------------	-------------------------	-----



EMERG SAFE ALT 100 NM 4600



CATEGORY	A	B	C	D	E
S-34 *	2280/24 492 (500-½)		2280/50 492 (500-1)		
C CIRCLING **	2300-1 510 (600-1)	2320-1 530 (600-1)	2460-1¾ 670 (700-1¾)	2460-2 670 (700-2)	2460-2¼ 670 (700-2¼)



TACAN W RWY 34